

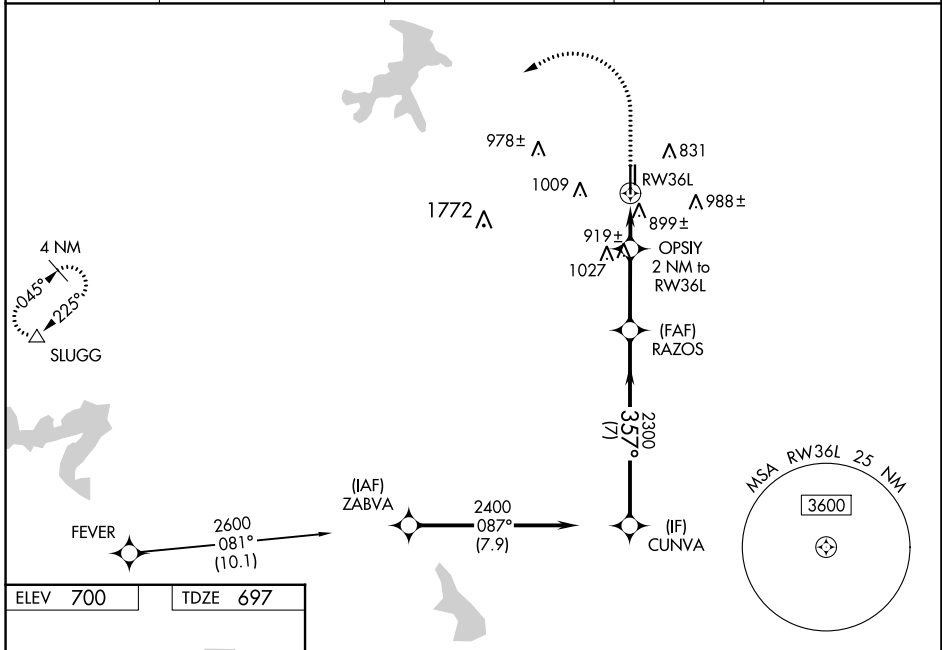
WAAS CH <b>57999</b> <b>W36A</b>	APP CRS <b>357°</b>	Rwy Idg TDZE Apt Elev	<b>6002</b> <b>697</b> <b>700</b>
--	------------------------	-----------------------------	---

# RNAV (GPS) RWY 36L

FORT WORTH SPINKS (FWS)

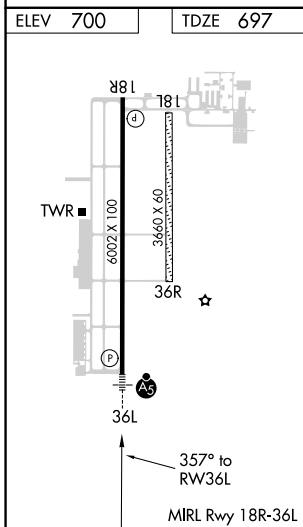
RNP APCH - GPS.		MALSR	MISSED APPROACH: Climb to 1400 then climbing left turn to 3100 direct SLUGG and hold.
<p>⚠ Circling NA west of Rwy 18R-36L. For uncompensated Baro-VNAV systems, LNAV/VNAV NA below -16°C or above 54°C. For inop ALS, increase LNAV/VNAV all Cats visibility to 1½ SM and increase LNAV Cats C/D visibility to 1¾ SM.</p>			

ATIS <b>120.025</b>	REGIONAL APP CON <b>135.975 379.9</b>	SPINKS TOWER ★ <b>124.625 (CTAF)</b>	GND CON <b>119.475</b>	UNICOM <b>122.7</b>
------------------------	--	---	---------------------------	------------------------



SC-2, 13 JUN 2024 to 11 JUL 2024

SC-2, 13 JUN 2024 to 11 JUL 2024



ELEV 700	TDZE 697	SLUGG			
		OPSIY 2 NM to RW36L		RAZOS	
		2300		2400	
		1360		2300	
		1.3		0.7	
		2.9 NM		7 NM	
CATEGORY	A	B	C	D	
LPV DA	897-½		200 (200-½)		
LNAV/VNAV DA	1193-1		496 (500-1)		
LNAV MDA	1160-½	463 (500-½)	1160-1	463 (500-1)	
CIRCLING	1200-1	500 (500-1)	1340-1¾	1340-2	
			640 (700-1¾)	640 (700-2)	