

TEXOMA FIVE DEPARTURE

REGIONAL DEP CON
135.975 379.9
ATIS
120.025
GND CON
119.475
SPINKS TOWER ★
124.625 (CTAF)

**TOP ALTITUDE:
ASSIGNED BY ATC**

TULSA
114.4 TUL
Chan 91

RADAR and DME required.

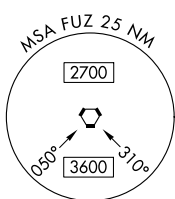
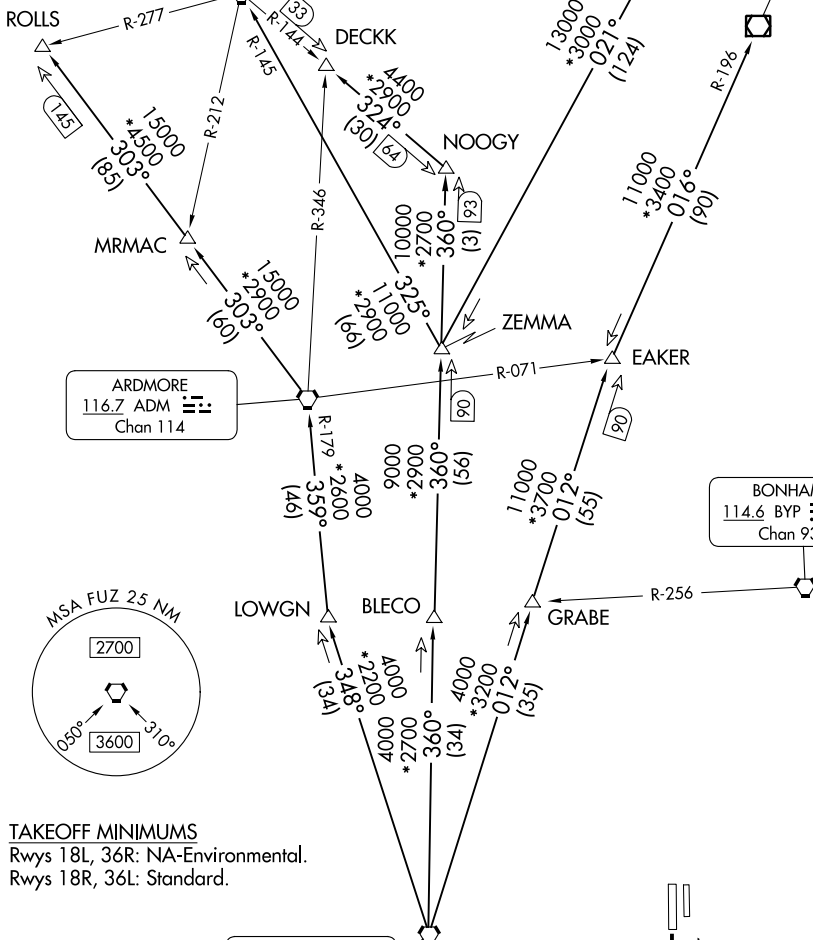
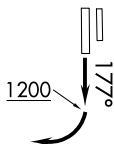
WILL ROGERS
114.1 IRW
Chan 88

OKMULGEE
114.9 OKM
Chan 96

ARDMORE
116.7 ADM
Chan 114

BONHAM
114.6 BYP
Chan 93

RANGER
115.7 FUZ
Chan 104



TAKEOFF MINIMUMS
Rwys 18L, 36R: NA-Environmental.
Rwys 18R, 36L: Standard.

NOTE: Chart not to scale.

(CONTINUED ON FOLLOWING PAGE)

SC-2, 13 JUN 2024 to 11 JUL 2024

SC-2, 13 JUN 2024 to 11 JUL 2024