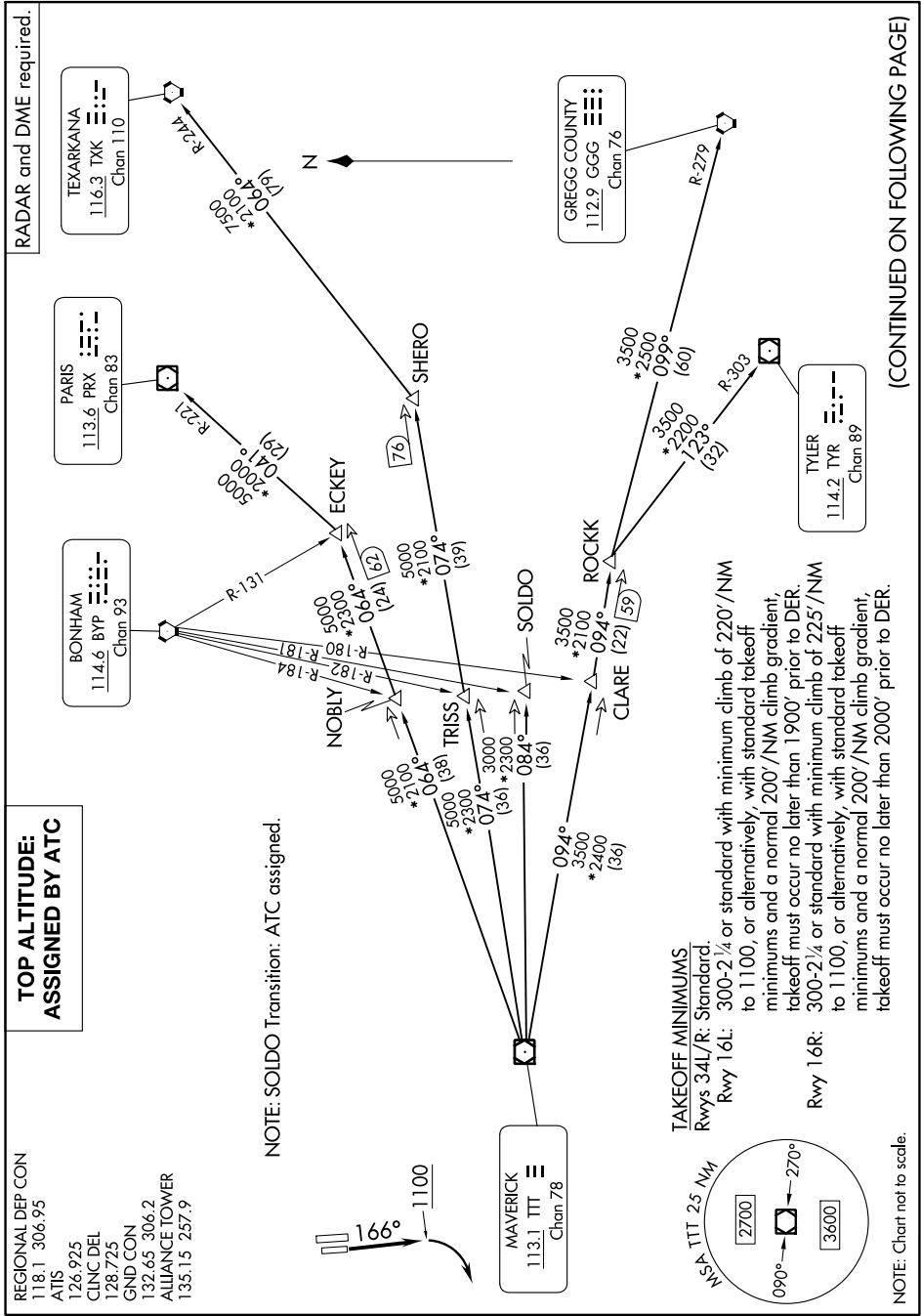


GARLAND FIVE DEPARTURE

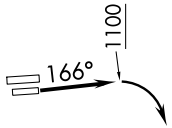
SC-2, 13 JUN 2024 to 11 JUL 2024



**TOP ALTITUDE:
ASSIGNED BY ATC**

REGIONAL DEP CON
118.1 306.95
ATIS
126.925
CLINC DEL
128.725
GND CON
132.65 306.2
ALLIANCE TOWER
135.15 257.9

NOTE: SOLDO Transition: ATC assigned.



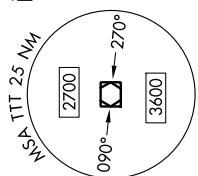
MAVERICK
113.1 TTT
Chan 78

TAKEOFF MINIMUMS

Rwys 34L/R: Standard.

Rwy 16L: 300-2 1/4 or standard with minimum climb of 220' /NM to 1100, or alternatively, with standard takeoff minimums and a normal 200' /NM climb gradient, takeoff must occur no later than 1900' prior to DER.

Rwy 16R: 300-2 1/4 or standard with minimum climb of 225' /NM to 1100, or alternatively, with standard takeoff minimums and a normal 200' /NM climb gradient, takeoff must occur no later than 2000' prior to DER.



NOTE: Chart not to scale.

(CONTINUED ON FOLLOWING PAGE)

GARLAND FIVE DEPARTURE