

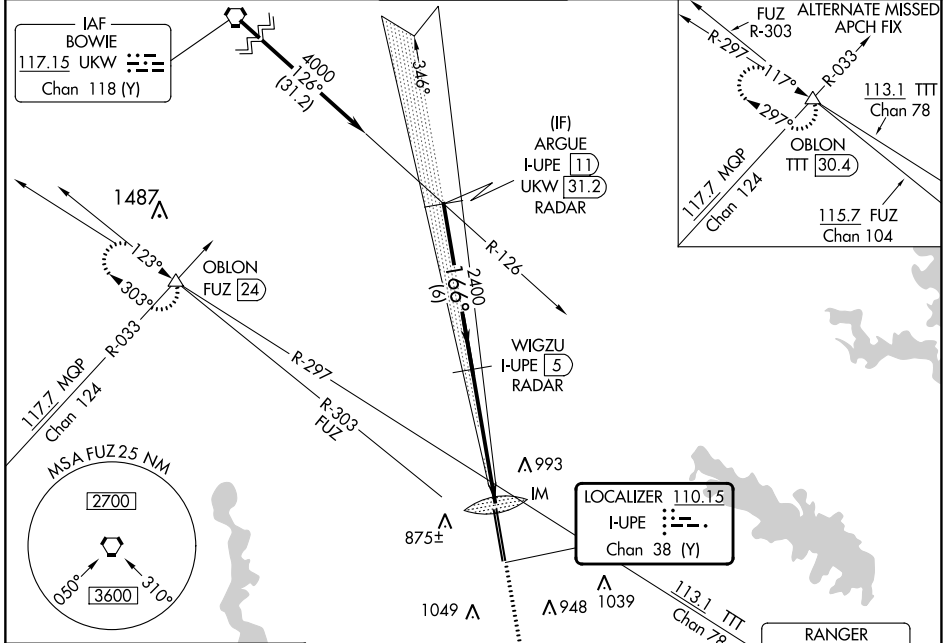
LOC/DME I-UP E	APP CRS	Rwy Idg	10600
110.15	166°	TDZE	723
Chan 38 (Y)		Apt Elev	723

ILS RWY 16L (CAT II & III)

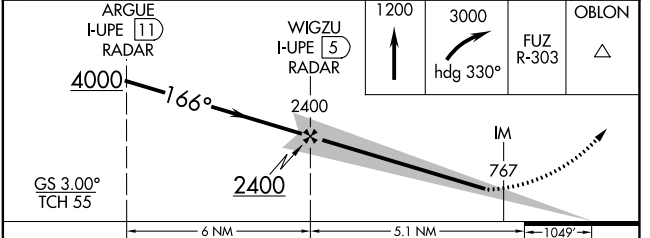
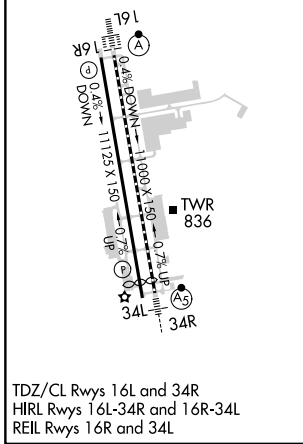
PEROT FLD/FORT WORTH ALLIANCE (AFW)

DME or RADAR required.		ALSIF-2	MISSED APPROACH: Climb to 1200 then climbing right turn to 3000 on heading 330° and FUZ VORTAC R-303 to OBLON INT/FUZ 24 DME and hold.	
------------------------	--	---------	--	--

ATIS 126.925	REGIONAL APP CON 118.1 306.95	ALLIANCE TOWER 135.15 257.9	GND CON 132.65 306.2	CLNC DEL 128.725
------------------------	---	---------------------------------------	--------------------------------	----------------------------



ELEV 723	D	TDZE 723
----------	----------	----------



GS 3.00°	TCH 55	6 NM	5.1 NM	1049'
CATEGORY	A	B	C	D
S-ILS 16L	CAT II RA 101/12		100 DA 823	
S-ILS 16L	CAT III		RVR 06	

CATEGORY II & III ILS - SPECIAL AIRCREW & AIRCRAFT CERTIFICATION REQUIRED

SC-2, 13 JUN 2024 to 11 JUL 2024

SC-2, 13 JUN 2024 to 11 JUL 2024