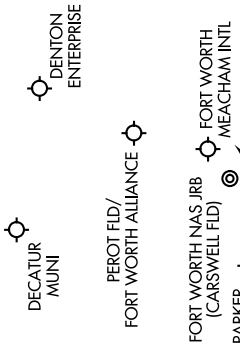


LIKES THREE ARRIVAL (RNAV)

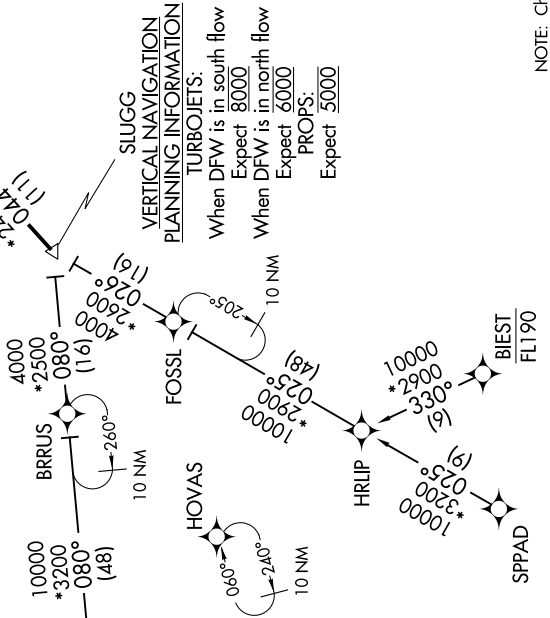
FORT WORTH, TEXAS

SC-2, 13 JUN 2024 to 11 JUL 2024



NOTE: RADAR required.
 NOTE: RNAV 1.
 NOTE: DME/DME/IRU or GPS required.

REGIONAL APP CON
 135.975 125.8 257.95
 AFW ATIS
 126.925
 FTW ATIS
 120.7
 KNFW ATIS*
 351.675



VERTICAL NAVIGATION PLANNING INFORMATION
TURBOJET:
 When DFW is in south flow
 Expect 8000
 When DFW is in north flow
 Expect 6000
PROPS:
 Expect 5000

ARRIVAL ROUTE DESCRIPTION
BIEST TRANSITION (BIEST.LIKES3)
FOSSL TRANSITION (FOSSL.LIKES3): (For ACT and GRK terminal area departures only.)
GEEKY TRANSITION (GEEKY.LIKES3)
LYMPY TRANSITION (LYMPY.LIKES3): (For ABI terminal area departures only.)
SPPAD TRANSITION (SPPAD.LIKES3)

From SLUGG on track 044° to LIKES, then on track 044°. Expect RADAR vectors to final approach course.

NOTE: Chart not to scale.

SC-2, 13 JUN 2024 to 11 JUL 2024

LIKES THREE ARRIVAL (RNAV)

FORT WORTH, TEXAS