

NANDR TWO DEPARTURE (RNAV)

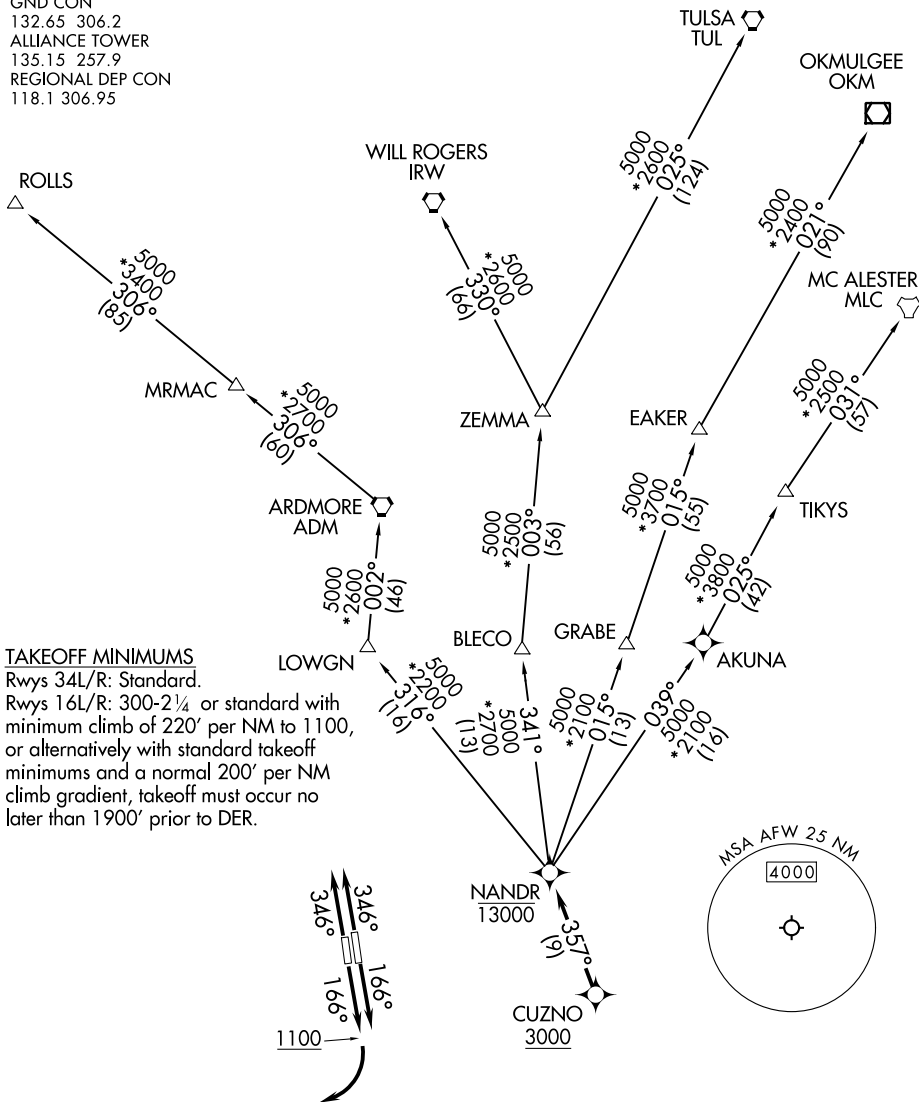
FORT WORTH, TEXAS

ATIS
 126.925
 CLNC DEL
 128.725
 GND CON
 132.65 306.2
 ALLIANCE TOWER
 135.15 257.9
 REGIONAL DEP CON
 118.1 306.95

RNAV 1 - DME/DME/IRU or GPS.

RADAR required.

**TOP ALTITUDE:
ASSIGNED BY ATC**



SC-2, 13 JUN 2024 to 11 JUL 2024

SC-2, 13 JUN 2024 to 11 JUL 2024

NOTE: EAKER transition: For TUL terminal arrivals only.
 NOTE: TULSA transition: For all aircraft overflying TUL VORTAC.
 NOTE: Aircraft arriving to the Oklahoma City terminal area, file and expect the ZEMMA enroute transition.

NOTE: Chart not to scale.

(NARRATIVE ON FOLLOWING PAGE)

NANDR TWO DEPARTURE (RNAV)

FORT WORTH, TEXAS