

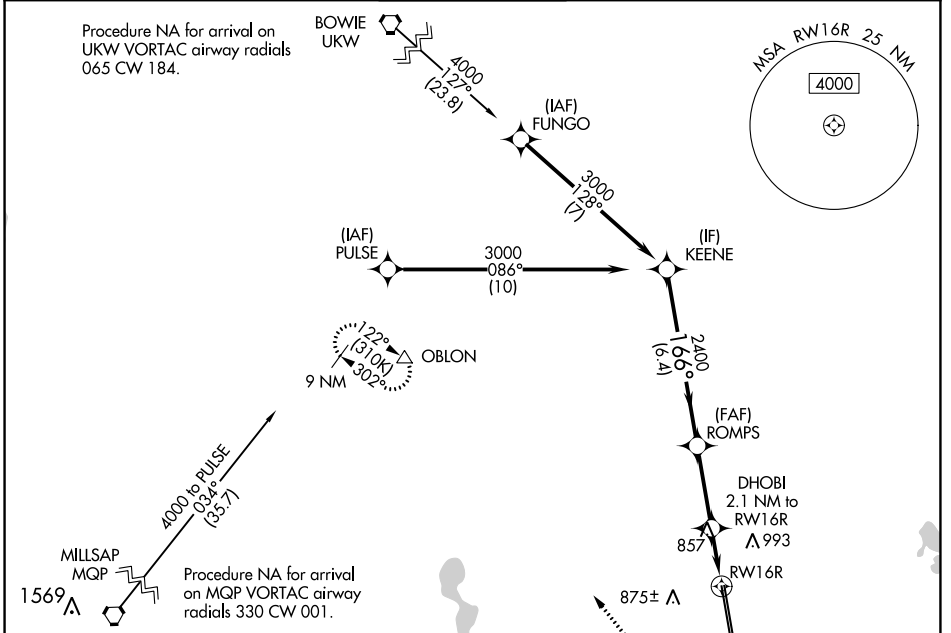
WAAS CH <b>99338</b> <b>W16A</b>	APP CRS <b>166°</b>	Rwy Idg <b>10410</b> TDZE <b>721</b> Apt Elev <b>723</b>
--	------------------------	--

# RNAV (GPS) RWY 16R

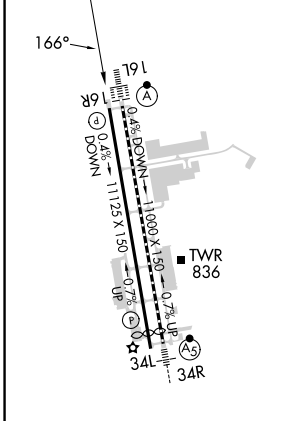
PEROT FLD/FORT WORTH ALLIANCE (A.F.W)

<b>⚠</b>	For uncompensated Baro-VNAV systems, LNAV/VNAV NA below -9°C (16°F) or above 54°C (130°F). Circling NA east of Rwy 16L-34R. DME/DME RNP-0.3 NA.	MISSED APPROACH: Climb to 1200 then climbing right turn to 3000 direct OBLON and hold.
----------	---	--

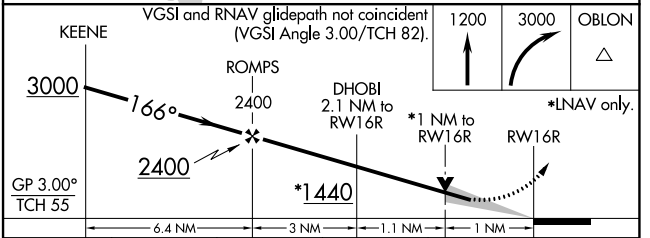
ATIS <b>126.925</b>	REGIONAL APP CON <b>118.1 306.95</b>	ALLIANCE TOWER <b>135.15 257.9</b>	GND CON <b>132.65 306.2</b>	CLNC DEL <b>128.725</b>
------------------------	---	---------------------------------------	--------------------------------	----------------------------



ELEV 723	<b>D</b>	TDZE 721
----------	----------	----------



TDZ/CL Rwsy 16L and 34R  
HIRL Rwy 16L-34R and 16R-34L  
REIL Rwsy 16R and 34L



CATEGORY	A	B	C	D	E
LPV DA		921- <sup>3</sup> / <sub>4</sub>	200 (200- <sup>3</sup> / <sub>4</sub> )		
LNAV/VNAV DA		1017- <sup>7</sup> / <sub>8</sub>	296 (300- <sup>7</sup> / <sub>8</sub> )		
LNAV MDA	1120-1	399 (400-1)	1120-1 <sup>1</sup> / <sub>8</sub>	399 (400-1 <sup>1</sup> / <sub>8</sub> )	
<b>C</b> CIRCLING	1200-1 477 (500-1)	1320-1 597 (600-1)	1360-1 <sup>3</sup> / <sub>4</sub> 637 (700-1 <sup>3</sup> / <sub>4</sub> )	1380-2 657 (700-2)	1380-2 <sup>1</sup> / <sub>4</sub> 657 (700-2 <sup>1</sup> / <sub>4</sub> )

# RNAV (GPS) RWY 16R

SC-2, 13 JUN 2024 to 11 JUL 2024

SC-2, 13 JUN 2024 to 11 JUL 2024