

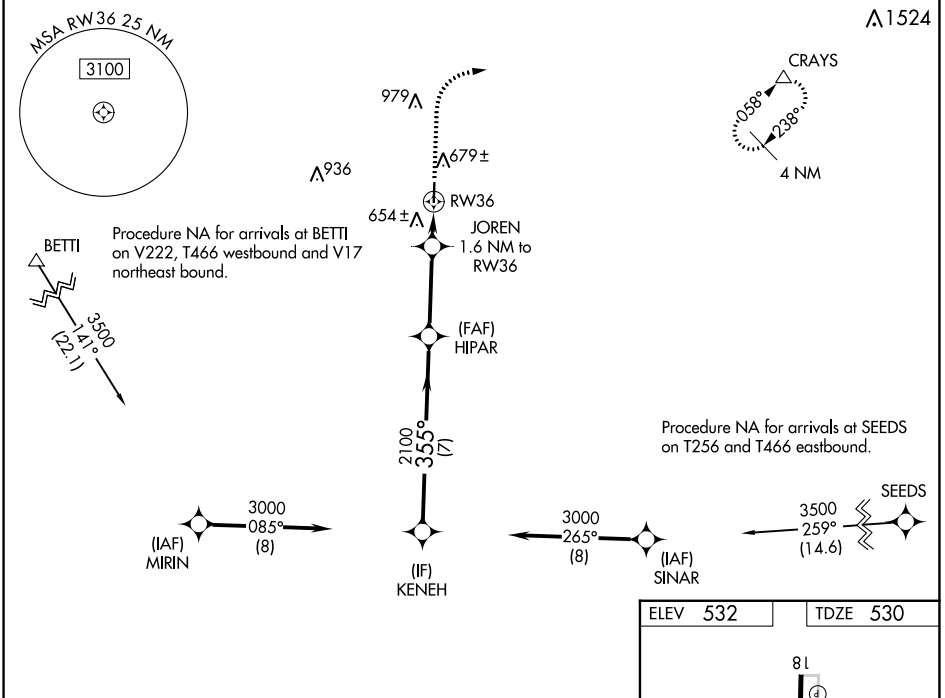
WAAS CH 53323 W36A	APP CRS 355°	Rwy Idg TDZE Apt Elev	4001 530 532
--	------------------------	-----------------------------	---

RNAV (GPS) RWY 36

LOCKHART MUNI (5ØR)

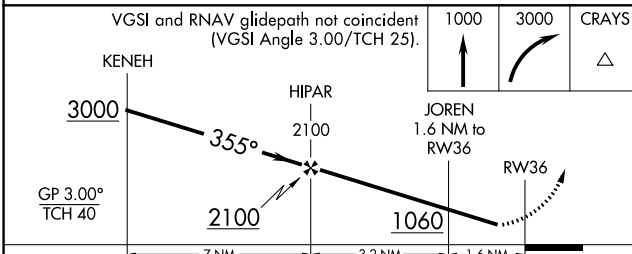
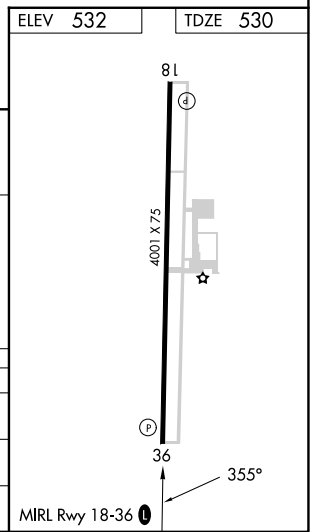
RNP APCH - GPS.	MISSED APPROACH: Climb to 1000, then climbing right turn to 3000 direct CRAYS and hold.
<p>∇ Rwy 36 helicopter visibility reduction below ¼ NA. Baro-VNAV NA. Use San Marcos altimeter setting; when not received, use Austin-Bergstrom Intl altimeter setting; increase LPV DA to 830 feet; increase LNAV/VNAV DA to 880 feet; increase all MDAs 20 feet and visibility Cat C ½ SM.</p> <p>Δ NA</p>	

AUSTIN APP CON 120.875 270.25	UNICOM 122.8 (CTAF) Ø
---	--



SC-3, 13 JUN 2024 to 11 JUL 2024

SC-3, 13 JUN 2024 to 11 JUL 2024



CATEGORY	A	B	C	D
LPV DA	813-1	283 (300-1)		NA
LNAV/VNAV DA	863-1 ½	333 (400-1 ½)		NA
LNAV MDA	940-1	410 (500-1)	940-1 ½ 410 (500-1 ½)	NA