

APP CRS	Rwy ldg	<b>3707</b>
<b>174°</b>	TDZE	<b>1561</b>
	Apt Elev	<b>1561</b>

# RNAV (GPS) RWY 17

ARLEDGE FLD (F56)

RNP APCH-GPS.

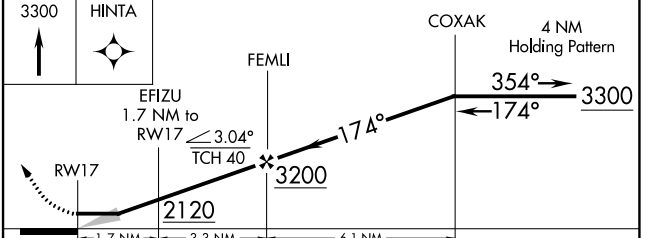
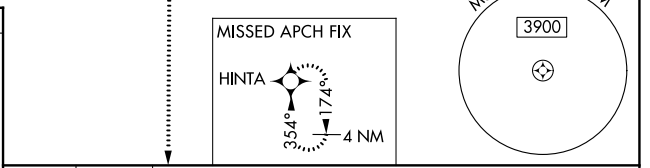
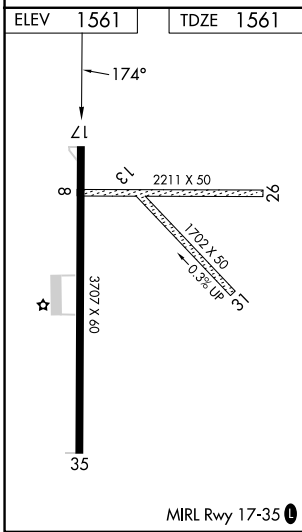
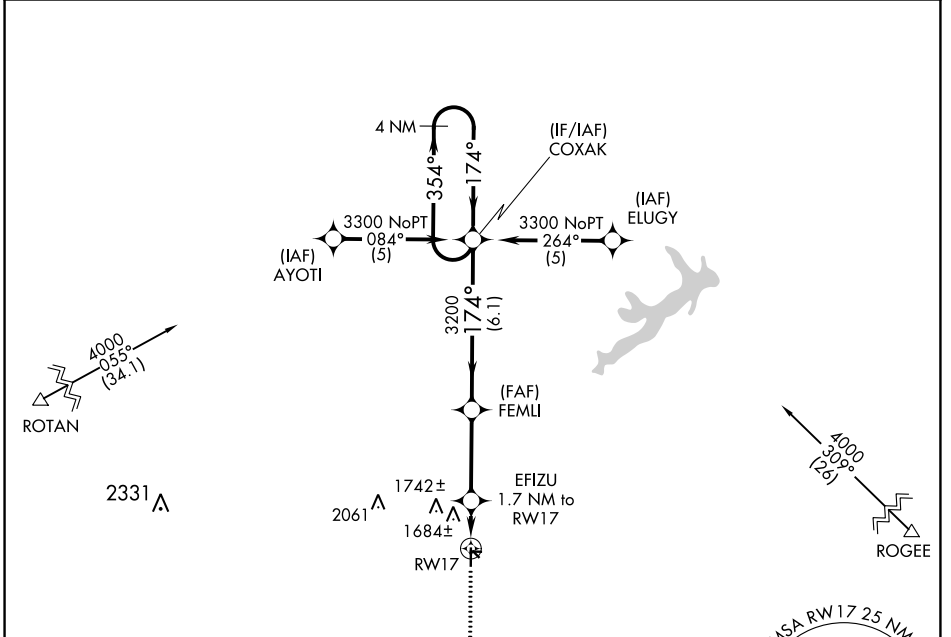
**Procedure NA at night. Use Abilene Rgnl altimeter setting; when not received use Breckenridge altimeter setting and increase all MDAs 40 feet.**

**Procedure NA at night. Use Abilene Rgnl altimeter setting; when not received use Breckenridge altimeter setting and increase all MDAs 40 feet.**

**Rwy 17 helicopter visibility reduction below 1 SM NA.**

MISSED APPROACH: Climb to 3300 direct HINTA and hold.

ABILENE APP CON	UNICOM
<b>127.2 282.3</b>	<b>122.8 (CTAF) 0</b>



CATEGORY	A	B	C	D
LNAV MDA	2040-1	479 (500-1)	2040-1 <sup>3</sup> / <sub>8</sub> 479 (500-1 <sup>3</sup> / <sub>8</sub> )	NA
CIRCLING	2100-1 539 (600-1)	2200-1 639 (700-1)	2220-1 <sup>3</sup> / <sub>4</sub> 659 (700-1 <sup>3</sup> / <sub>4</sub> )	NA

# RNAV (GPS) RWY 17

SC-2, 13 JUN 2024 to 11 JUL 2024

SC-2, 13 JUN 2024 to 11 JUL 2024