

WAAS CH <b>97634</b> <b>W19A</b>	APP CRS <b>194°</b>	Rwy Idg TDZE Apt Elev	<b>5507</b> <b>497</b> <b>497</b>
--	------------------------	-----------------------------	---

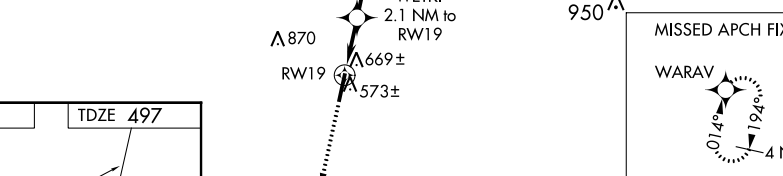
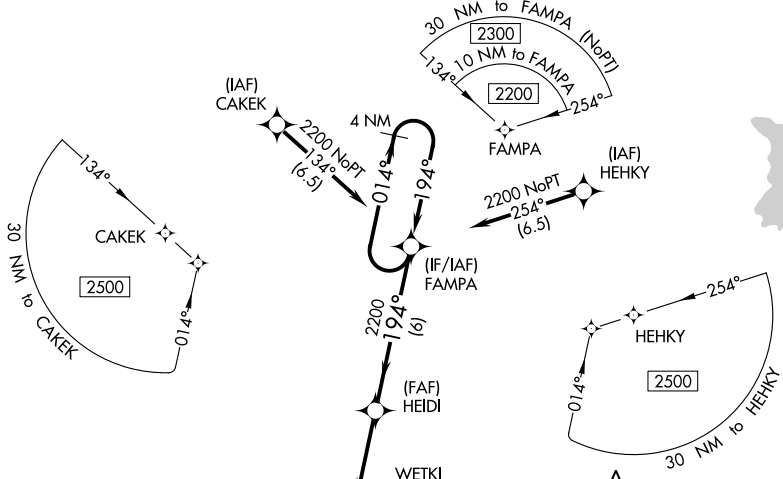
# RNAV (GPS) RWY 19

CARROLL COUNTY (HZD)

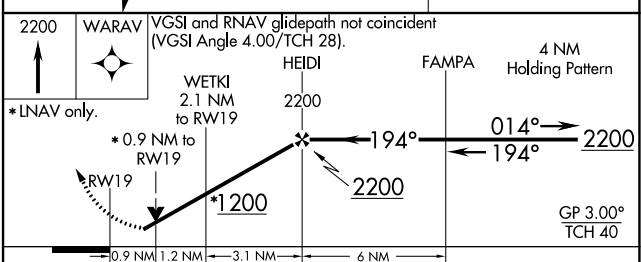
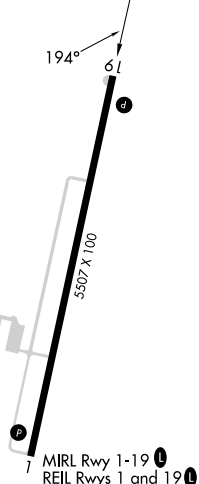
**NA** For uncompensated Baro-VNAV systems, LNAV/VNAV NA below -15°C (5°F) or above 54°C (130°F). DME/DME RNP-0.3 NA. When local altimeter setting not received, use Mc Kellar-Sipes Rgnl altimeter setting and increase all DA 94 feet and all MDA 100 feet; increase LPV all Cats and LNAV/VNAV all Cats visibility 3/8 mile, LNAV Cats C and D visibility 1/4 mile, and Circling Cats C and D visibility 1/2 mile. VDP and Baro-VNAV NA with Mc Kellar-Sipes Rgnl altimeter setting. Helicopter visibility reduction below 3/4 SM NA.

MISSED APPROACH:  
Climb to 2200 direct  
WARAV and hold.

AWOS-3 <b>133.275</b>	MEMPHIS CENTER <b>134.65 316.15</b>	UNICOM <b>122.8 (CTAF)</b>
--------------------------	--	-------------------------------



ELEV 497	TDZE 497
----------	----------



CATEGORY	A	B	C	D
LPV DA		798-1	301 (400-1)	
LNAV/VNAV DA		933-1½	436 (500-1½)	
LNAV MDA	920-1	423 (500-1)	920-1¼	423 (500-1¼)
<b>C</b> CIRCLING	980-1	483 (500-1)	1220-2 723 (800-2)	1220-2¼ 723 (800-2¼)

SE-1, 13 JUN 2024 to 11 JUL 2024

SE-1, 13 JUN 2024 to 11 JUL 2024