

WAAS CH <b>49016</b> <b>W34A</b>	APP CRS <b>346°</b>	Rwy Idg TDZE Apt Elev	<b>6101</b> <b>5012</b> <b>5024</b>
--	------------------------	-----------------------------	---

# RNAV (GPS) RWY 34

MC CALL MUNI (MYL)

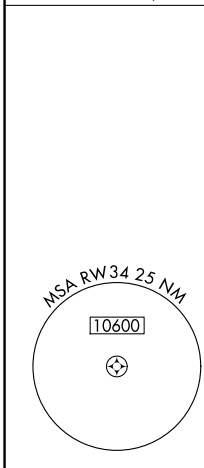
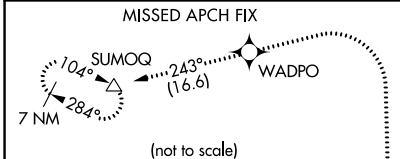
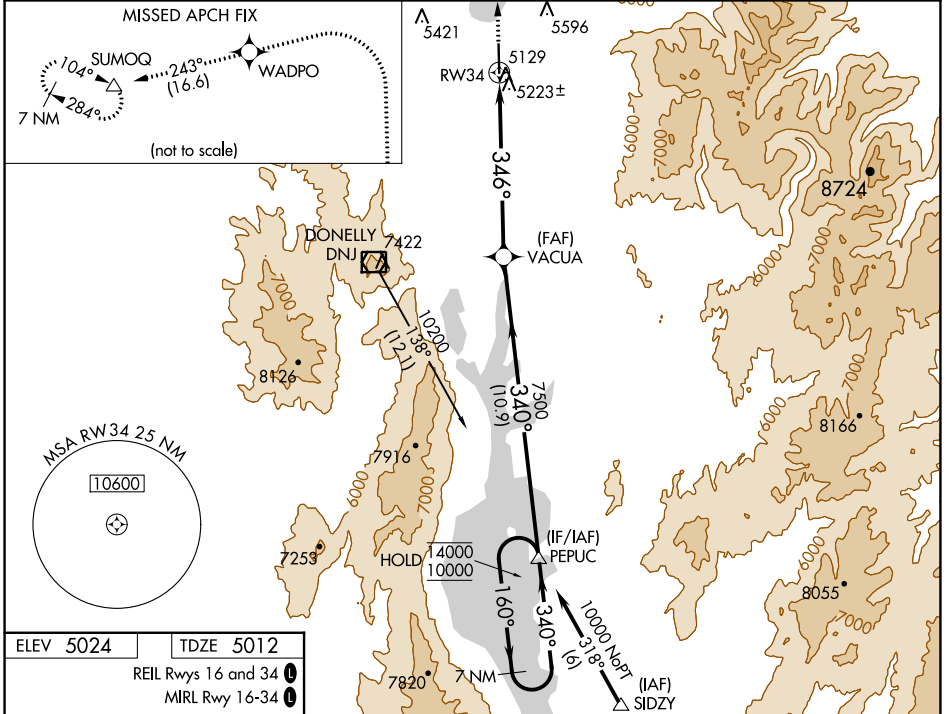
RNP AR APCH - GPS.

For uncompensated Baro-VNAV systems, LNAV/VNAV NA below -24°C or above 40°C. When local altimeter setting not received, procedure NA. Rwy 34 helicopter visibility reduction below 3/4 SM NA. Circling Rwy 16 NA at night.

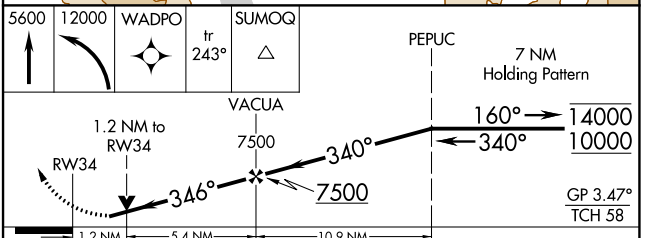
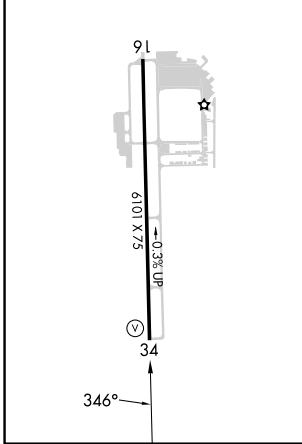
MISSED APPROACH: Climb to 5600, then climbing left turn to 2000 direct WADPO and on track 243° to SUMOQ and hold, continue climb-in-hold to 12000.

\*Missed approach requires minimum climb of 265 feet per NM to 6380.

ASOS <b>119.925</b>	SALT LAKE CENTER <b>128.05 306.95</b>	UNICOM <b>122.8 (CTAF) 0</b>
------------------------	--	---------------------------------



ELEV 5024	TDZE 5012
REIL Rwy 16 and 34	MIRL Rwy 16-34



CATEGORY	A	B	C	D
LPV DA	5375-1 363 (400-1)			
LNAV/VNAV DA	5683-1 671 (700-1 1/2)			
LNAV MDA*	5520-1	508 (500-1)	5520-1 1/2	508 (500-1 1/2)
LNAV MDA	5680-1	668 (700-1)	5680-1 1/2	668 (700-1 1/2)
CIRCLING	5700-1 676 (700-1)	5920-1 1/4 896 (900-1 1/4)	6140-3 1116 (1200-3)	6660-3 1636 (1700-3)

NW-1, 13 JUN 2024 to 11 JUL 2024

NW-1, 13 JUN 2024 to 11 JUL 2024