

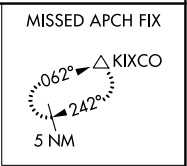
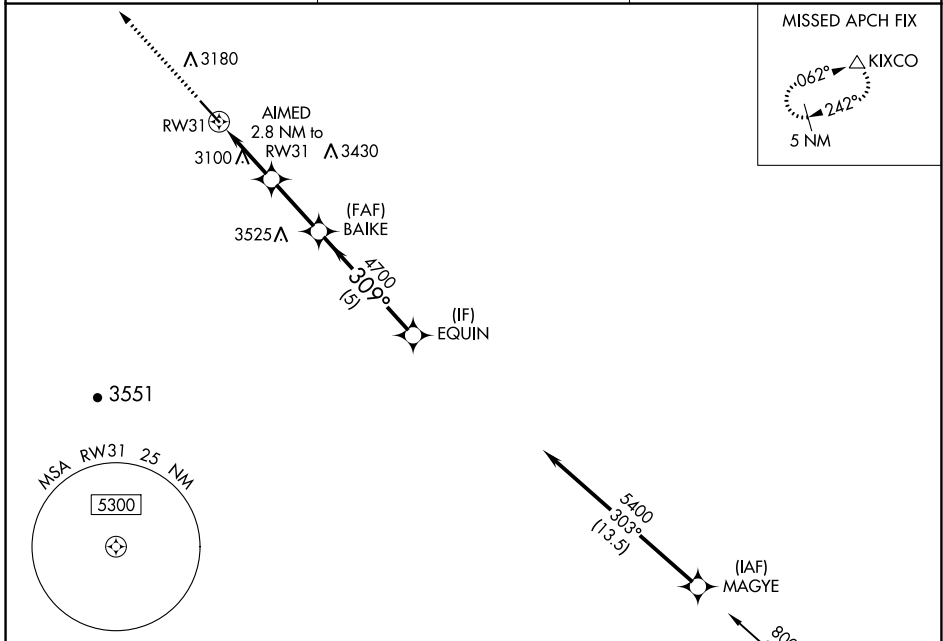
WAAS CH <b>50138</b> W31A	APP CRS <b>309°</b>	Rwy Idg TDZE Apt Elev	<b>5904</b> <b>2981</b> <b>2981</b>
---------------------------------	------------------------	-----------------------------	---

# RNAV (GPS) RWY 31

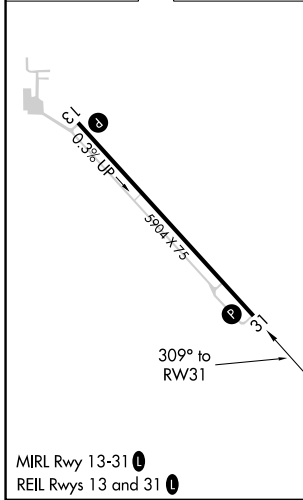
BAKER MUNI (BHK)

RNP APCH.	MISSED APPROACH: Climb to 3500 then climbing right turn 6000 direct KIXCO and hold.
<p>▼ For uncompensated Baro-VNAV systems, LNAV/VNAV NA below -27°C or above 54°C. When local altimeter setting not received, procedure NA.</p>	

ASOS <b>135.475</b>	SALT LAKE CENTER <b>126.85 305.2</b>	CTAF <b>122.9</b>
------------------------	---	----------------------

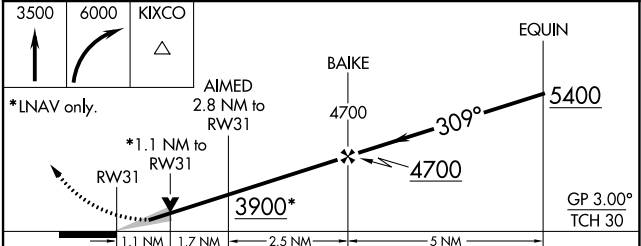


ELEV 2981	TDZE 2981
-----------	-----------



MIRL Rwy 13-31  
REIL Rwy 13 and 31

Procedure NA for arrivals at DIXLE on V491 southbound and on V120 eastbound.



CATEGORY	A	B	C	D
LPV DA		3231-7/8	250 (300-7/8)	
LNAV/VNAV DA		3267-1	286 (300-1)	
LNAV MDA		3360-1	379 (400-1)	
<b>C</b> CIRCLING	3540-1	559 (600-1)	3620-1 3/4 639 (700-1 3/4)	3820-2 3/4 839 (900-2 3/4)

NW-1, 13 JUN 2024 to 11 JUL 2024

NW-1, 13 JUN 2024 to 11 JUL 2024