

WAAS CH <b>78009</b> W15A	APP CRS <b>148°</b>	Rwy ldg TDZE Apt Elev	<b>3700</b> <b>1806</b> <b>1806</b>
---------------------------------	------------------------	-----------------------------	---

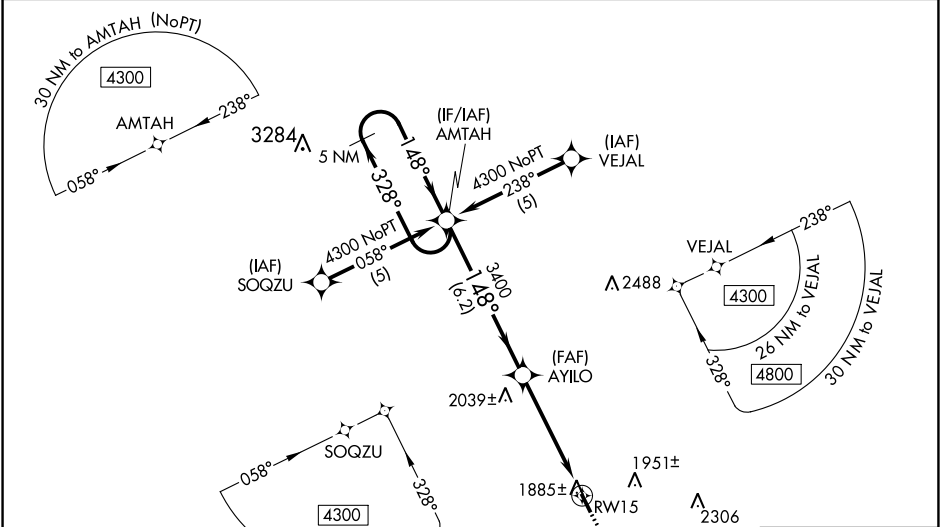
# RNAV (GPS) RWY 15

ALBION MUNI (BVN)

**⚠** For uncompensated Baro-VNAV systems, LNAV/VNAV NA below -18°C (0°F) or above 54°C (130°F). DME/DME RNP-0.3 NA. Visibility reduction by helicopters NA. When local altimeter setting not received, use Norfolk altimeter setting and increase all DA 106 feet, all MDA 120 feet, and increase LPV and LNAV/VNAV visibility ¼ mile all Cats. Baro-VNAV and VDP NA when using Norfolk altimeter setting.

**MISSED APPROACH:** Climb to 4300 direct AMIVY and hold.

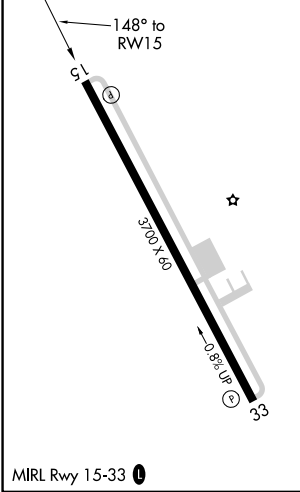
AWOS-3 <b>118.575</b>	MINNEAPOLIS CENTER <b>128.0 257.95</b>	CTAF <b>122.9</b> <b>0</b>
--------------------------	---	-------------------------------



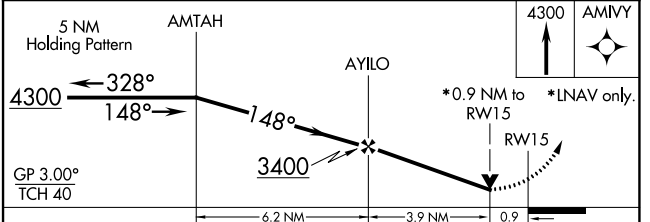
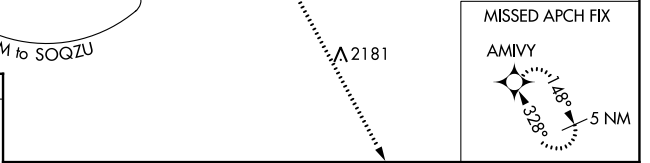
NC-2, 13 JUN 2024 to 11 JUL 2024

NC-2, 13 JUN 2024 to 11 JUL 2024

ELEV <b>1806</b>	TDZE <b>1806</b>
------------------	------------------



MIRL Rwy 15-33 **0**



CATEGORY	A	B	C	D
LPV DA	2130-1 ¼	324 (400-1 ¼)		NA
LNAV/VNAV DA	2269-1 ¾	463 (500-1 ¾)		NA
LNAV MDA	2140-1	334 (400-1)		NA
CIRCLING	2360-1	2420-1		NA
	554 (600-1)	614 (700-1)		