

WAAS CH <b>40440</b> <b>W01A</b>	APP CRS <b>007°</b>	Rwy Idg TDZE Apt Elev	<b>6200</b> <b>1276</b> <b>1303</b>
--	------------------------	-----------------------------	---

# RNAV (GPS) RWY 1

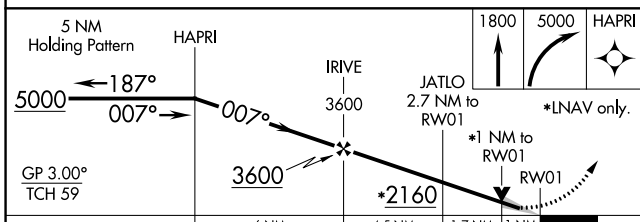
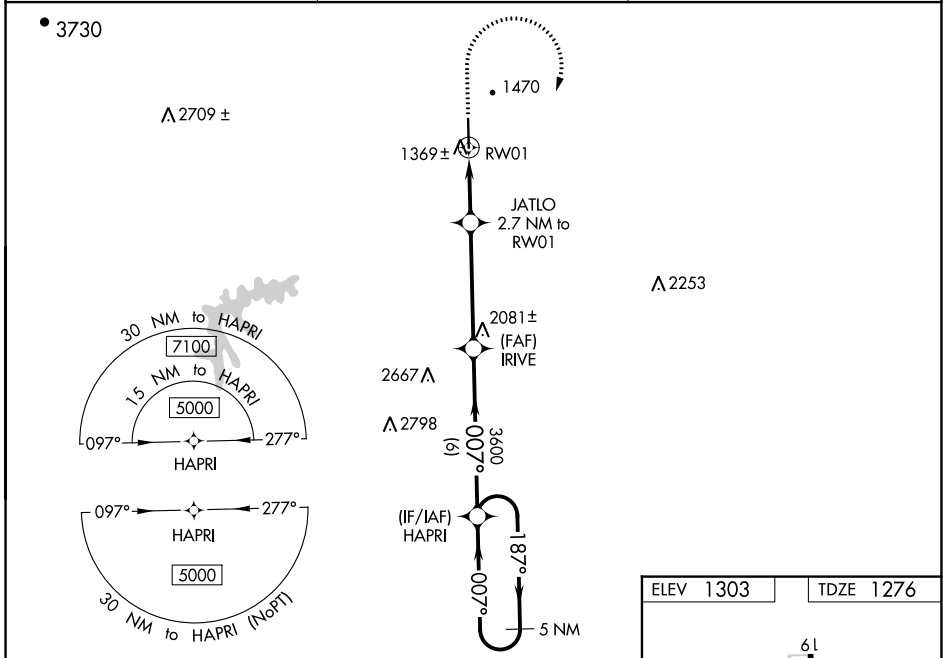
WILKES COUNTY (UKF)

**⚠** For uncompensated Baro-VNAV systems, LNAV/VNAV NA below -17°C (2°F) or above 54°C (130°F). DME/DME RNP-0.3 NA. When local altimeter setting not received, use Hickory altimeter setting and increase LPV DA to 1566 feet and LNAV/VNAV DA to 1669 feet and LNAV/VNAV visibility all Cats ¼ SM. Increase all MDAs 100 feet and LNAV visibility Cats C/D ¼ SM and Circling Cat C ½ SM. For inop ALS when using Hickory altimeter setting, increase LPV all Cats visibility to 1 SM. VDP and Baro-VNAV NA when using Hickory altimeter setting.

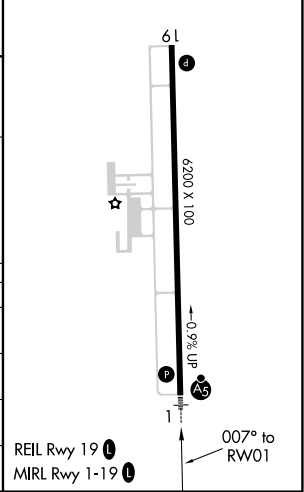
**MALSR**

**MISSED APPROACH:** Climb to 1800 then climbing right turn to 5000 direct HAPRI and hold, continue climb-in-hold to 5000.

AWOS-3 <b>126.625</b>	ATLANTA CENTER <b>125.15 263.0</b>	UNICOM <b>122.7 (CTAF) 1</b>
--------------------------	---------------------------------------	---------------------------------



ELEV 1303	TDZE 1276
-----------	-----------



CATEGORY	A	B	C	D
LPV DA		1476-½	200 (200-½)	
LNAV/VNAV DA		1579-⅝	303 (300-⅝)	
LNAV MDA	1620-½	344 (400-½)	1620-⅝	344 (400-⅝)
<b>C</b> CIRCLING	1800-1 497 (500-1)	1880-1 577 (600-1)	1880-1½ 577 (600-1½)	2240-3 937 (1000-3)

SE-2, 13 JUN 2024 to 11 JUL 2024

SE-2, 13 JUN 2024 to 11 JUL 2024