

WAAS CH 99740 W19A	APP CRS 187°	Rwy Idg TDZE Apt Elev	6200 1303 1303
---------------------------------	------------------------	-----------------------------	---

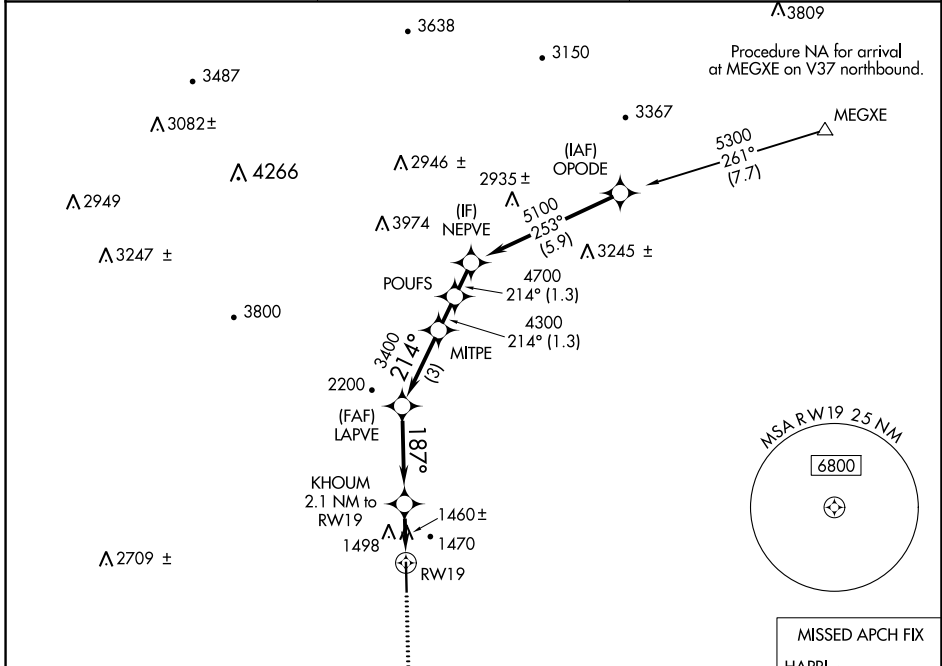
RNAV (GPS) RWY 19

WILKES COUNTY (UKF)

⚠ DME/DME RNP-0.3 NA. VDP NA when using Hickory altimeter setting. When local altimeter setting not received, use Hickory altimeter setting and increase all MDAs 100 feet and LP and LNAV visibility Cats C/D ¼ SM and increase Circling visibility Cat C ½ SM. Rwy 19 helicopter visibility reduction below ¾ SM NA.

MISSED APPROACH: Climb to 5000 direct HAPRI and hold, continue climb-in-hold to 5000.

AWOS-3 126.625	ATLANTA CENTER 125.15 263.0	UNICOM 122.7 (CTAF) 0
--------------------------	---------------------------------------	---------------------------------



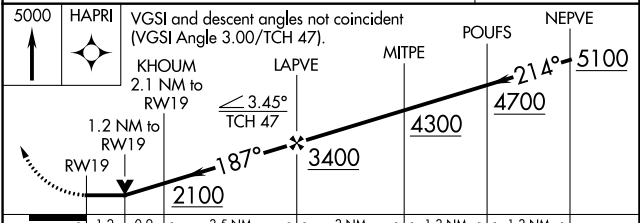
ELEV 1303	TDZE 1303
------------------	------------------

187° to RWY 19

61

6200 X 100

0.9% up



CATEGORY	A	B	C	D
LP MDA	1720-1	417 (500-1)	1720-1½	417 (500-1½)
LNAV MDA	1760-1	457 (500-1)	1760-1¾	457 (500-1¾)
CIRCLING	1800-1 497 (500-1)	1880-1 577 (600-1)	1880-1½ 577 (600-1½)	2240-3 937 (1000-3)

SE-2, 13 JUN 2024 to 11 JUL 2024

SE-2, 13 JUN 2024 to 11 JUL 2024