

VOR/DME <b>FAY</b>	APP CRS	Rwy Idg	<b>5006</b>
<b>114.85</b>	<b>152°</b>	TDZE	<b>132</b>
Chan <b>95(Y)</b>		Apt Elev	<b>132</b>

**VOR/DME RWY 15**  
CURTIS L BROWN JR FLD (EYF)

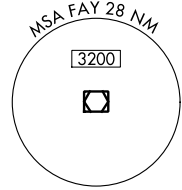
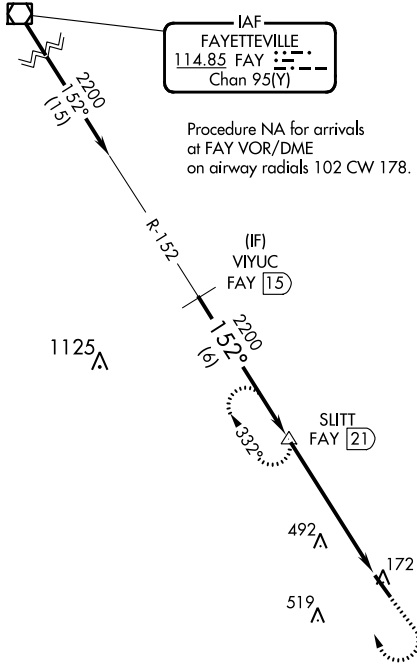
**▼** Visibility reduction by helicopters NA. When local altimeter setting not received, use Fayetteville altimeter setting; increase all MDA 80 feet and increase S-15 Cats C and D and Circling Cat C and D visibility ¼ SM.

**MISSED APPROACH:** Climb to 1000 then climbing right turn to 2200 on FAY R-152 to SLITT/21 DME and hold.

AWOS-3P  
**119.475**

FAYETTEVILLE APP CON  
**133.0 290.25**

UNICOM  
**122.8 (CTAF) ①**



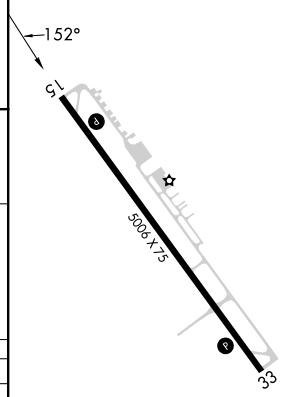
IAF  
FAYETTEVILLE  
114.85 FAY  
Chan 95(Y)

Procedure NA for arrivals at FAY VOR/DME on airway radials 102 CW 178.

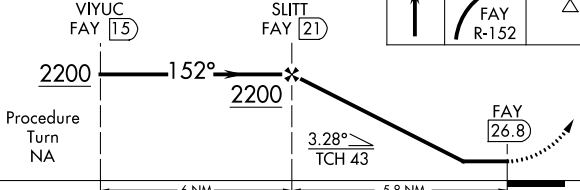
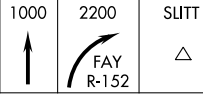
SE-2, 13 JUN 2024 to 11 JUL 2024

SE-2, 13 JUN 2024 to 11 JUL 2024

ELEV 132	TDZE 132
----------	----------



VGSI and RNAV glidepath not coincident (VGSI Angle 3.00/TCH 32).



CATEGORY	A	B	C	D
S-15	760-1 628 (700-1)	760-1¼ 628 (700-1¼)	760-1¾ 628 (700-1¾)	760-2 628 (700-2)
CIRCLING	760-1 628 (700-1)	760-1¼ 628 (700-1¼)	880-2¼ 748 (800-2¼)	880-2½ 748 (800-2½)

REIL Rwy 15 and 33 ①  
MIRL Rwy 15-33 ①