

APP CRS	Rwy Idg	2697
320°	TDZE	763
	Apt Elev	763

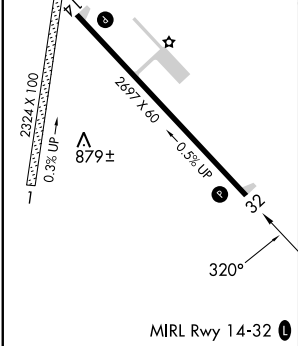
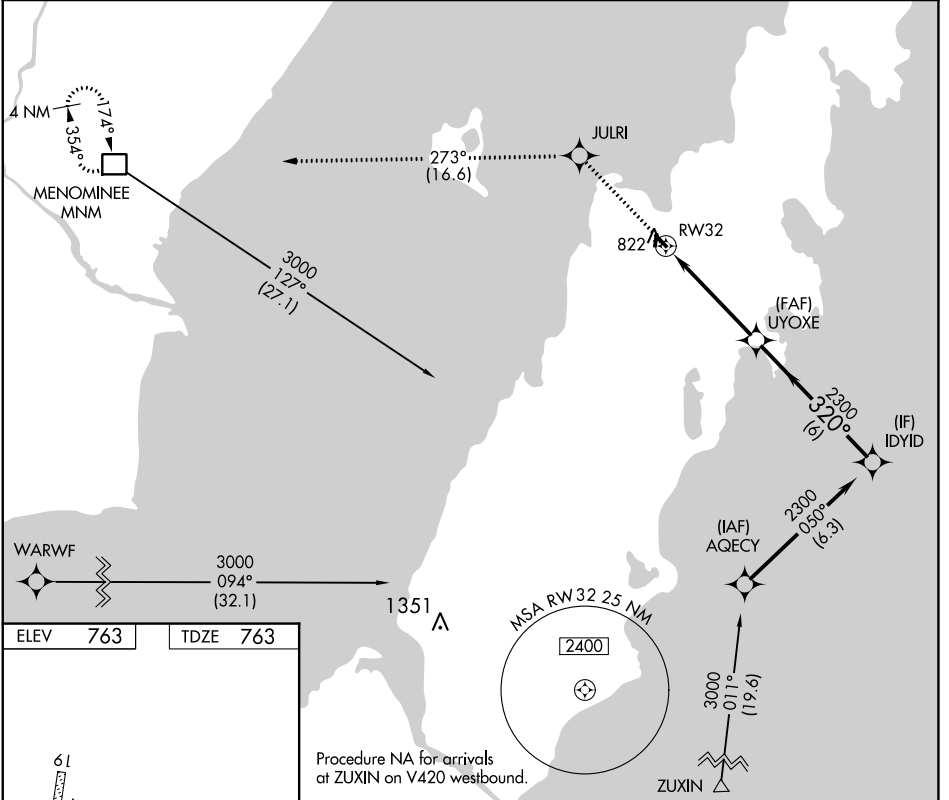
RNAV (GPS) RWY 32

EPHRAIM/GIBRALTAR (3D2)

RNP APCH - GPS.

MISSED APPROACH: Climb to 3000 direct JULRI and on track 273° to MNM DME and hold.

<p>▼ ▲</p> <p>Procedure NA at night. Rwy 32 helicopter visibility reduction below ¼ SM NA.</p>	<p>AWOS-3PT 124.175</p>	<p>GREEN BAY APP CON★ 120.3 338.2</p>	<p>UNICOM 123.0 (CTAF) 0</p>
--	------------------------------------	--	---



3000	JULRI	tr 273°	MNM	VGSI and descent angles not coincident (VGSI Angle 3.00/TCH 25).
↑	✧		□	
UYOXE		IDYID		
1.1 NM to RW32		320°		2300
RW32		3.00° TCH 40		
1.1		3.6 NM		6 NM
CATEGORY	A	B	C	D
LNAV MDA	1120-1		357 (400-1)	NA

EC-3, 13 JUN 2024 to 11 JUL 2024

EC-3, 13 JUN 2024 to 11 JUL 2024