

APP CRS **001°**
 Rwy Idg **2721**
 TDZE **919**
 Apt Elev **919**

RNAV (GPS) RWY 36

NECEDAH (DAF)

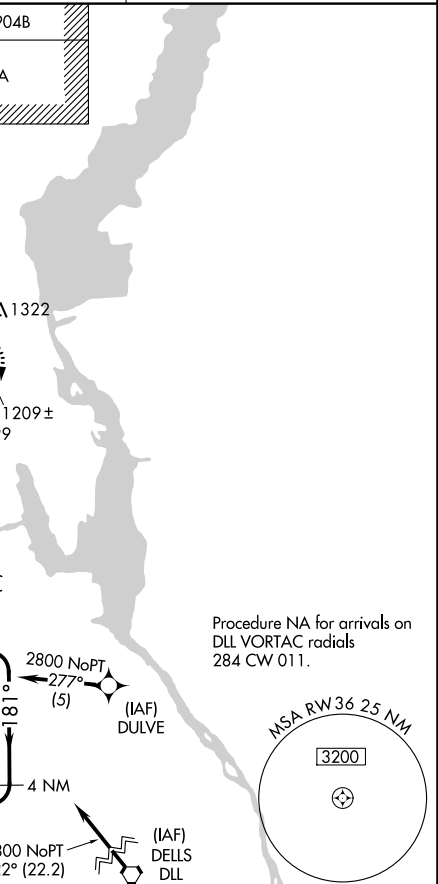
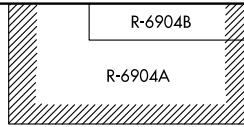
⚠ Rwy 36 helicopter visibility reduction below 1 SM NA.
⚠ DME/DME-0.3 NA. Procedure NA at night. Use Wisconsin Rapids altimeter setting.

MISSED APPROACH: Climbing right turn to 2800 direct AJEPO and hold.

ISW ASOS
126.575

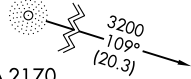
VOL APP CON ★
135.25 244.875

UNICOM
122.7 (CTAF) 0



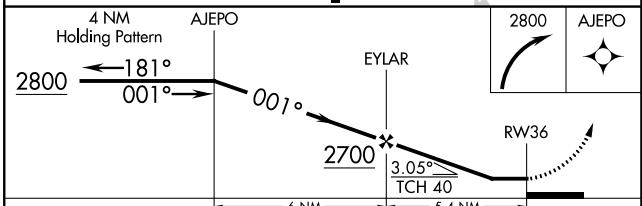
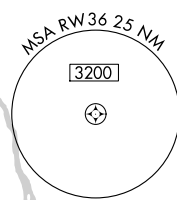
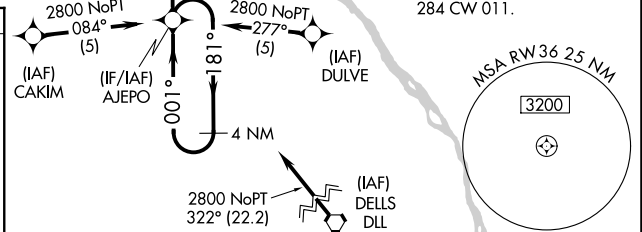
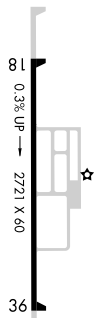
Procedure NA for arrival at bearings from CMY NDB 018 CW 198.

MCCOY
 CMY



Procedure NA for arrivals on DLL VORTAC radials 284 CW 011.

ELEV 919 TDZE 919



CATEGORY	A	B	C	D
LNAV MDA	1540-1	621 (700-1)		NA
CIRCLING	1580-1 661 (700-1)	1700-1 781 (800-1)		NA

EC-3, 13 JUN 2024 to 11 JUL 2024

EC-3, 13 JUN 2024 to 11 JUL 2024