

WAAS CH 77729 W30A	APP CRS 295°	Rwy Idg TDZE Apt Elev	3901 810 813
--	------------------------	-----------------------------	---

RNAV (GPS) RWY 30

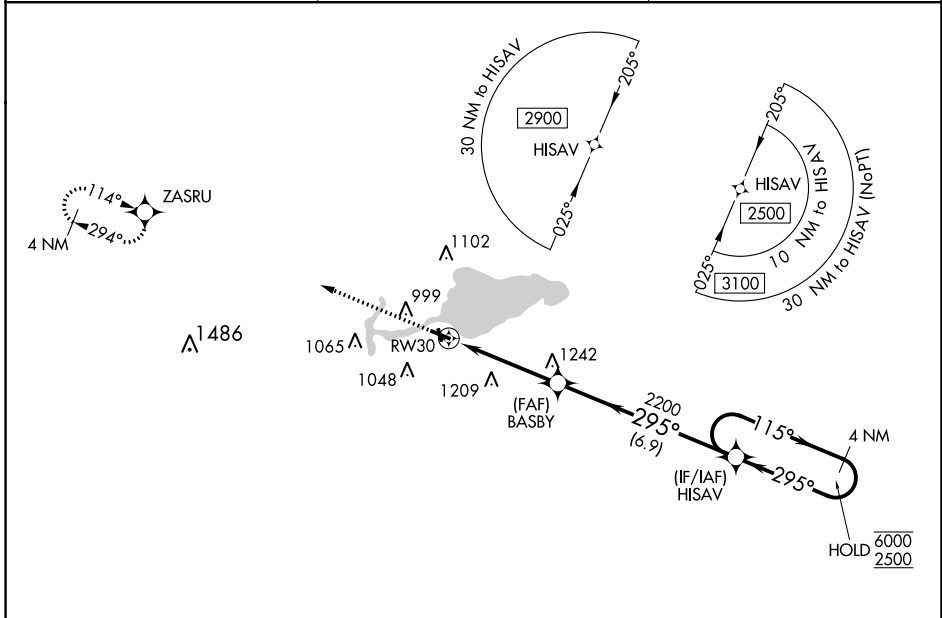
SHAWANO MUNI (E/ZS)

RNP APCH - GPS.

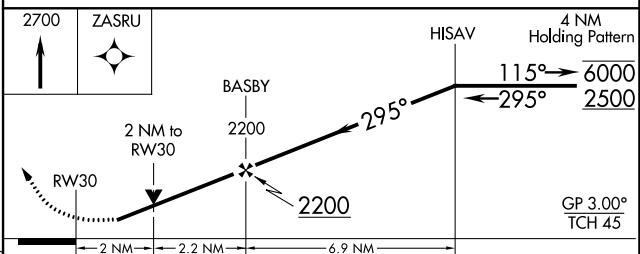
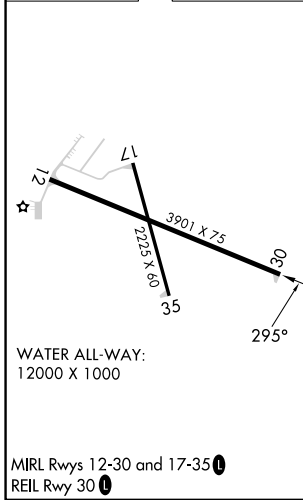
▼ Rwy 30 helicopter visibility reduction below 3/4 SM NA. For uncompensated Baro-VNAV systems, LNAV/VNAV NA below -16°C or above 54°C. Circling to Rwy 12, 35 NA at night.

MISSED APPROACH:
Climb to 2700 direct ZASRU and hold.

AWOS-3 118.65	GREEN BAY APP CON ★ 119.4 338.2	UNICOM 122.8 (CTAF) ①
-------------------------	---	---------------------------------



ELEV 813	TDZE 810
----------	----------



CATEGORY	A	B	C	D
LPV DA		1097-1	287 (300-1)	
LNAV/VNAV DA		1456-1 7/8	646 (700-1 7/8)	
LNAV MDA	1500-1	690 (700-1)	1500-2	690 (700-2)
C CIRCLING	1500-1	687 (700-1)	1680-2 1/2 867 (900-2 1/2)	1680-2 3/4 867 (900-2 3/4)

EC-3, 13 JUN 2024 to 11 JUL 2024

EC-3, 13 JUN 2024 to 11 JUL 2024