

VORTAC MSN <b>108.6</b> Chan <b>23</b>	APP CRS <b>106°</b>	Rwy Idg TDZE Apt Elev <b>920</b>	N/A N/A <b>920</b>
--	------------------------	--	--------------------------

**VOR or GPS-A**  
BLACKHAWK AIRFIELD (87Y)

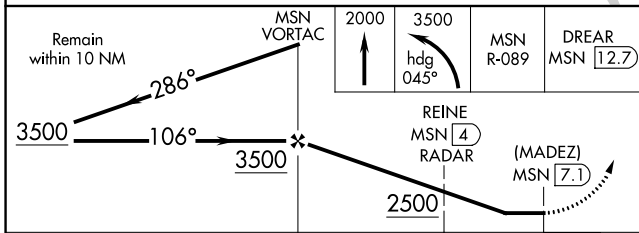
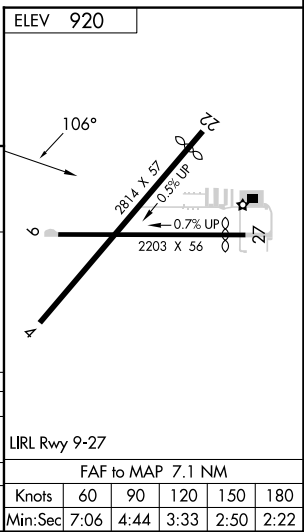
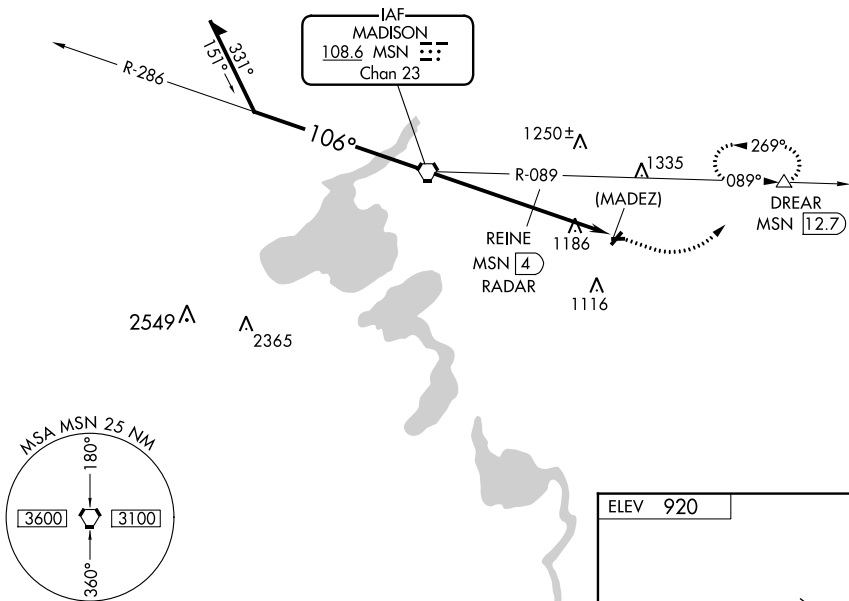
**NA** Use Dane County Rgnl-Truax Fld altimeter setting. DME required.

**MISSED APPROACH:** Climb to 2000 then climbing left turn to 3500 via heading 045° and MSN R-089 to DREAR/MSN 12.7 DME and hold.

MADISON APP CON\* **120.1 343.7**

UNICOM **122.7** (CTAF)

NoPT for arrivals on MSN VORTAC radials 231 CW 351.



CATEGORY	A	B	C	D
<b>CIRCLING</b>	2500-1¼ 1580 (1600-1¼)	2500-1½ 1580 (1600-1½)	NA	NA
REINE FIX MINIMUMS				
<b>CIRCLING</b>	1520-1 600 (600-1)	1560-1 640 (700-1)	NA	NA

LIRL Rwy 9-27					
FAF to MAP 7.1 NM					
Knots	60	90	120	150	180
Min:Sec	7:06	4:44	3:33	2:50	2:22

EC-3, 13 JUN 2024 to 11 JUL 2024

EC-3, 13 JUN 2024 to 11 JUL 2024