

| | | |
|--|------------------------|---|
| WAAS CH 97339 W22A | APP CRS 225° | Rwy Idg 5002 TDZE 107 Apt Elev 112 |
|--|------------------------|---|

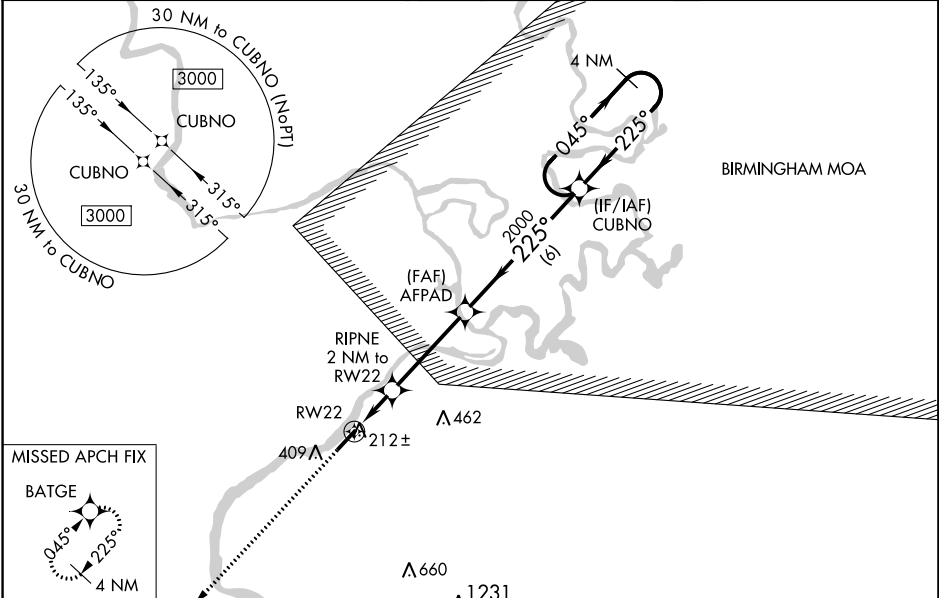
RNAV (GPS) RWY 22

DEMOPOLIS RGNL (DYA)

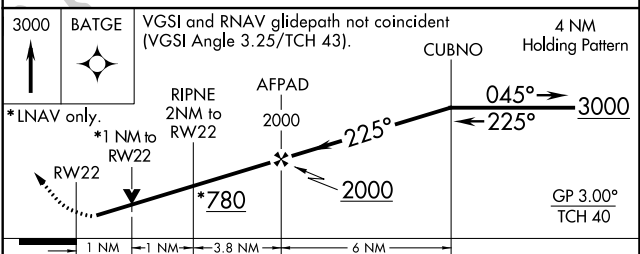
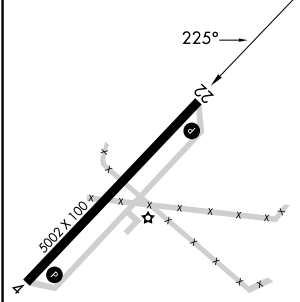
⚠ For uncompensated Baro-VNAV systems, LNAV/VNAV NA below -15°C (5°F) or above 54°C (130°F).
⚠ DME/DME RNP-0.3 NA. When local altimeter setting not received, use Marion altimeter setting and increase LPV and LNAV/VNAV DA 82 feet and all MDA 100 feet; increase LPV all Cats visibility ¼ mile, increase LNAV/VNAV all Cats and LNAV Cats C/D visibility ⅓ mile, increase Circling Cat C visibility ¼ mile, and Circling Cat D visibility ½ mile. Baro-VNAV and VDP NA when using Marion altimeter setting. Helicopter visibility reduction below ⅓ SM NA.

MISSED APPROACH:
Climb to 3000 direct BATGE and hold.

| | | |
|---------------------------|---|---------------------------------|
| AWOS-3P 119.475 | MERIDIAN APP CON* 121.275 348.7 | UNICOM 122.8 (CTAF) 0 |
|---------------------------|---|---------------------------------|



| | |
|----------|----------|
| ELEV 112 | TDZE 107 |
|----------|----------|



| CATEGORY | A | B | C | D |
|-------------------|-------|-------------|------------------------------|----------------------|
| LPV DA | | 369-7/8 | 262 (300-7/8) | |
| LNAV/VNAV DA | | 385-7/8 | 278 (300-7/8) | |
| LNAV MDA | | 480-1 | 373 (400-1) | |
| C CIRCLING | 720-1 | 608 (700-1) | 720-1 3/4 608 (700-1 3/4) | 780-2 668 (700-2) |

SE-4, 13 JUN 2024 to 11 JUL 2024

SE-4, 13 JUN 2024 to 11 JUL 2024