

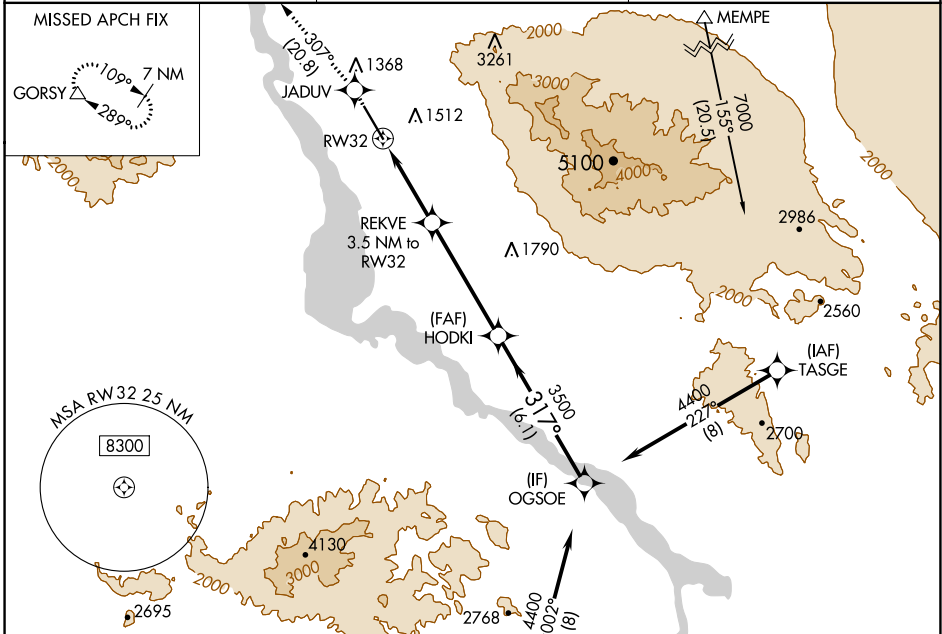
WAAS CH <b>49110</b> <b>W32A</b>	APP CRS <b>317°</b>	Rwy Idg TDZE Apt Elev	<b>8000</b> <b>783</b> <b>783</b>
--	------------------------	-----------------------------	---

# RNAV (GPS) RWY 32

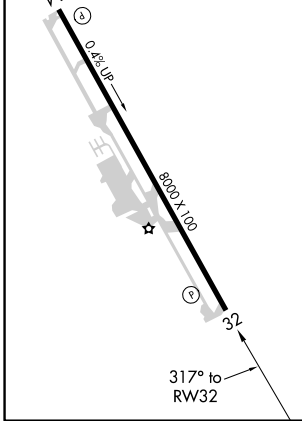
LAKE HAVASU CITY (HII)

RNP APCH.	MISSED APPROACH: Climb to 6300 direct JADUV and track 307° to GORSY and hold, continue climb-in-hold to 6300.
<p>⚠ Circling NA northeast of Rwy 14-32.</p> <p>⚠ Rwy 32 helicopter visibility reduction below ¾ SM NA.</p>	

AWOS-3 <b>119.025</b>	LOS ANGELES CENTER <b>134.65 360.65</b>	UNICOM <b>122.7 (CTAF) 0</b>
--------------------------	--	---------------------------------



ELEV 783	TDZE 783
REIL Rws 14 and 32	MIRL Rwy 14-32



6300	JADUV	tr 307°	GORSY	VGSI and RNAV glidepath not coincident (VGSI Angle 3.00/TCH 36).
*LNAV only.		REKVE 3.5 NM to RW32	HODKI 3500	OGSOE 4400
RW32		*2.6 NM to RW32	1940*	GP 3.00° TCH 50
-2.6 NM		0.9	4.7 NM	6.1 NM

CATEGORY	A	B	C	D
LPV DA	1265-1 3/8 482 (500-1 3/8)			
LNAV MDA	1660-1 877 (900-1)	1660-1 1/4 877 (900-1 1/4)	1660-2 1/2 877 (900-2 1/2)	877 (900-2 1/2)
CIRCLING	1660-1 1/4 877 (900-1 1/4)	1800-3 1017 (1100-3)	2180-3 1397 (1400-3)	

SW-4, 13 JUN 2024 to 11 JUL 2024

SW-4, 13 JUN 2024 to 11 JUL 2024