

APP CRS **135°**
 Rwy Idg **3901**
 TDZE **265**
 Apt Elev **265**

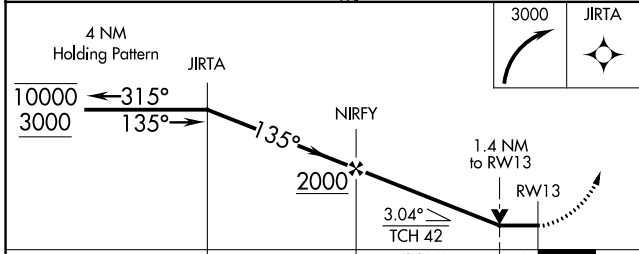
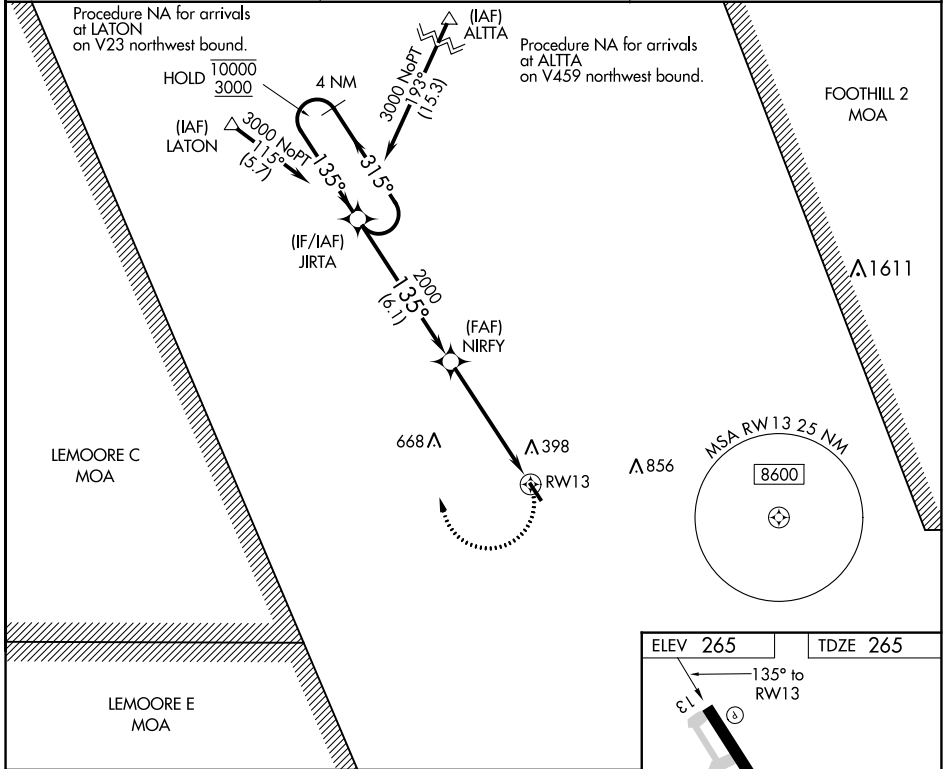
RNAV (GPS) RWY 13

MEFFORD FLD (TLR)

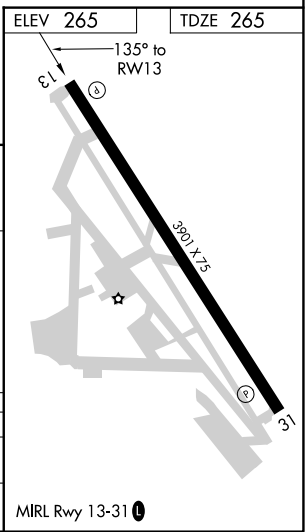
RNP APCH. MISSED APPROACH: Climbing right turn to 3000 direct JIRTA and hold, Continue climb-in-hold to 3000.

⚠️ NA Circling Rwy 31 NA at night. Rwy 13 helicopter visibility reduction below 3/4 SM NA. When local altimeter setting not received, use Visalia altimeter setting and increase all MDA 40 feet.

AWOS-3PT **120.0** FRESNO APP CON **118.5 268.7** UNICOM **122.7 (CTAF) 0**



CATEGORY	A	B	C	D
LNVA MDA	740-1	475 (500-1)	740-1 ³ / ₈ 475 (500-1 ³ / ₈)	NA
C CIRCLING	760-1	495 (500-1)	760-1 ¹ / ₂ 495 (500-1 ¹ / ₂)	NA



SW-2, 13 JUN 2024 to 11 JUL 2024

SW-2, 13 JUN 2024 to 11 JUL 2024