

WAAS CH 62825 W23A	APP CRS 227°	Rwy Idg 5498 TDZE 352 Apt Elev 368
--	------------------------	---

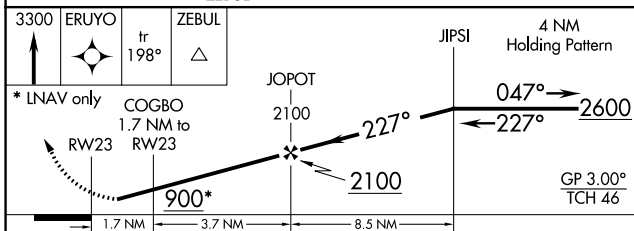
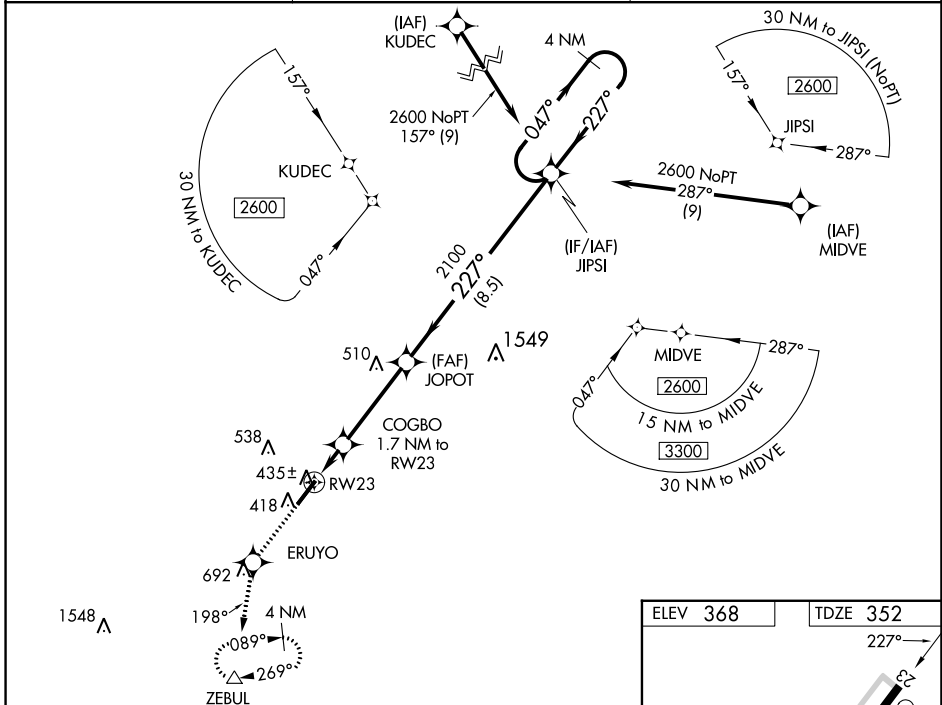
RNAV (GPS) RWY 23

TRIANGLE NORTH EXEC (LHZ)

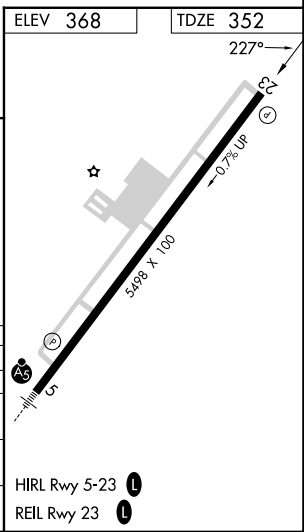
⚠ Baro-VNAV NA when using Raleigh-Durham altimeter setting. For uncompensated Baro-VNAV systems, LNAV/VNAV NA below -15°C (5°F) or above 41°C (105°F). When VGSi inop, Straight-in/Circling Rwy 23 procedure NA at night. DME/DME RNP-0.3 NA. Helicopter visibility reduction below 1 SM NA. When local altimeter setting not received, use Raleigh-Durham altimeter setting and increase LPV DA to 667 feet; LNAV/VNAV DA to 684 feet and all visibilities ½ SM. Increase all MDAs 80 feet and visibility Cats C/D ¾ SM.

MISSED APPROACH: Climb to 3300 direct ERUYO and on track 198° to ZEBUL and hold, continue climb-in-hold to 3300.

AWOS-3 118.325	RALEIGH APP CON 125.3 353.675	UNICOM 123.0 (CTAF) 0
--------------------------	---	---------------------------------



CATEGORY	A	B	C	D
LPV DA		602-1	250 (300-1)	
LNAV/VNAV DA		619-1	267 (300-1)	
LNAV MDA		700-1	348 (400-1)	
CIRCLING	800-1 432 (500-1)	840-1 472 (500-1)	980-1¾ 612 (700-1¾)	1000-2 632 (700-2)



SE-2, 13 JUN 2024 to 11 JUL 2024

SE-2, 13 JUN 2024 to 11 JUL 2024