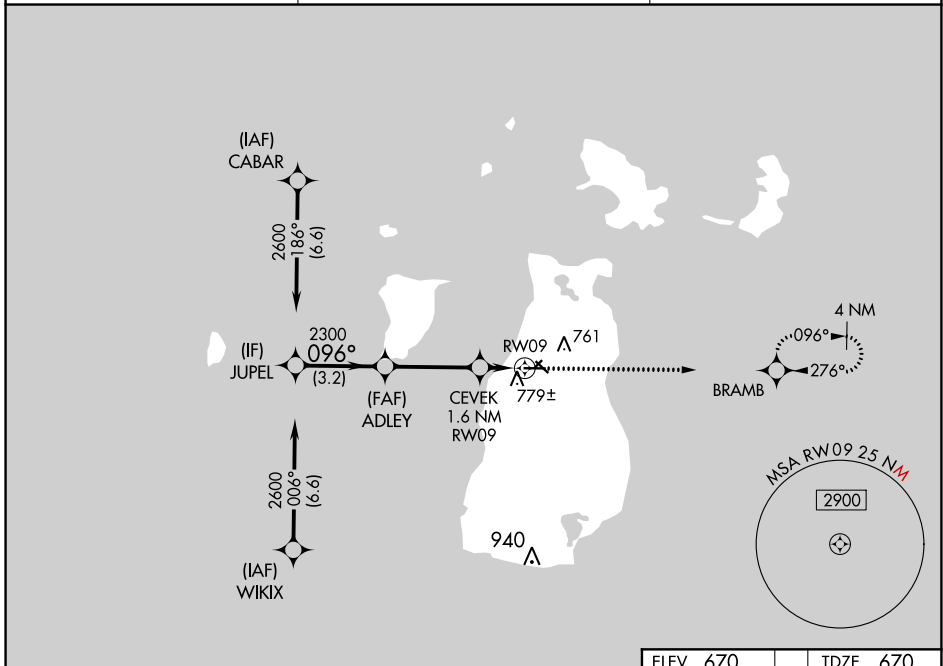


WAAS CH 77943 W09A	APP CRS 096°	Rwy Idg 4299 TDZE 670 Apt Elev 670
--	------------------------	---

RNAV (GPS) RWY 9

BEAVER ISLAND (SJX)

RNP APCH - GPS.		MISSED APPROACH: Climb to 2600 direct BRAMB and hold.
<p>▼ Circling NA to Rwys 5-23 and 14-32. For uncompensated Baro-VNAV systems, LNAV/VNAV NA below -16°C or above 54°C.</p> <p>▲</p>		
AWOS-3 118.075	MINNEAPOLIS CENTER 134.6 354.05	UNICOM 122.8 (CTAF) 0



EC-1, 13 JUN 2024 to 11 JUL 2024

EC-1, 13 JUN 2024 to 11 JUL 2024

VGSi and RNAV glidepath not coincident (VGSi Angle 3.00/TCH 24).		ELEV 670	TDZE 670
		BRAMB	
GP 3.00° TCH 40			
CATEGORY	A	B	C
LPV DA		920-1 250 (300-1)	NA
LNAV/VNAV DA		949-1 279 (300-1)	NA
LNAV MDA		1040-1 370 (400-1)	NA
C CIRCLING	1120-1 450 (500-1)		1180-1½ 510 (600-1½)
		MIRL Rwy 9-27 0	REIL Rwy 9 and 27 0