

LOC/DME I-RPO <b>109.1</b> Chan 28	APP CRS <b>018°</b>	Rwy Ldg TDZE Apt Elev <b>N/A</b> <b>2131</b>
--	------------------------	---

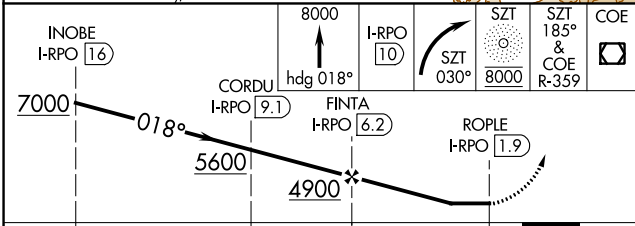
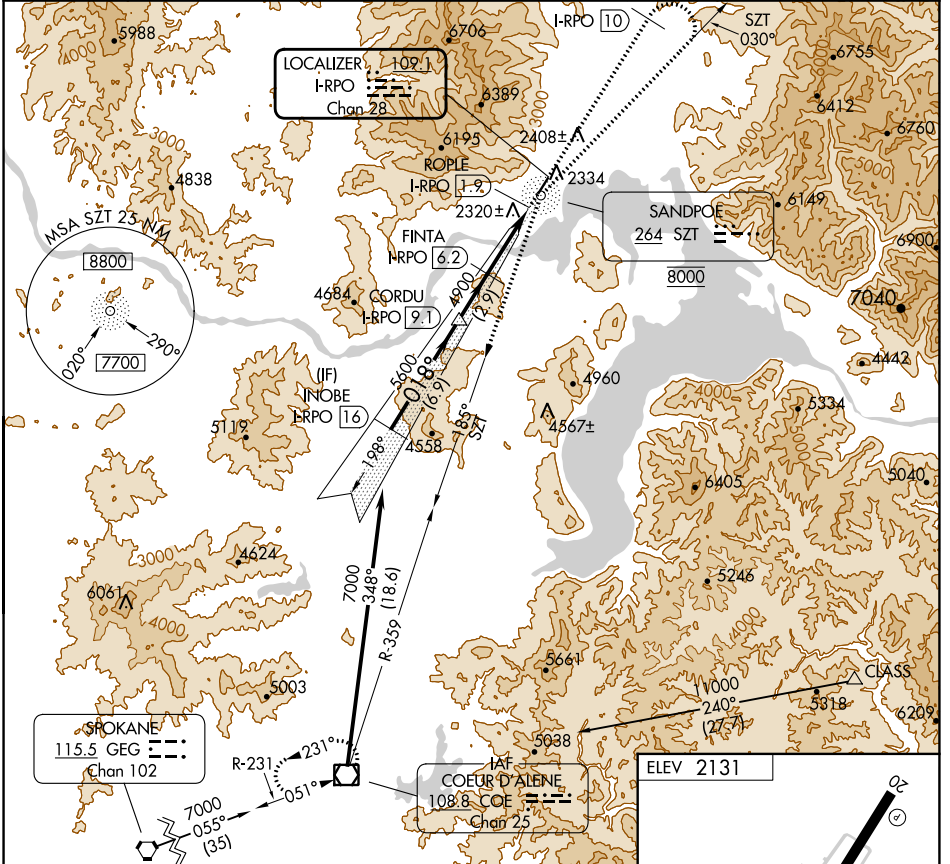
# LOC-A SANDPOINT (SZT)

ADF and DME required.

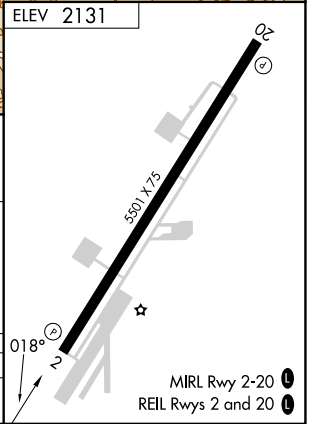
MISSED APPROACH: Climb to 8000 on heading 018° to I-RPO 10 DME and climbing right turn on SZT NDB bearing 030° to SZT NDB to cross SZT NDB at 8000 then on SZT NDB bearing 185° and COE VOR/DME R-359 to COE VOR/DME and hold.

**NA** Circling NA west of Rwy 2-20. When local altimeter setting not received, use Deer Park altimeter setting and increase all MDA 120 feet.

AWOS-3 <b>135.425</b>	SEATTLE CENTER <b>123.95 290.55</b>	UNICOM <b>122.7 (CTAF)</b>
--------------------------	--	-------------------------------



CATEGORY	A	B	C	D
<b>CIRCLING</b>	3180-1¼ 1049 (1100-1¼)	3180-1½ 1049 (1100-1½)	3180-3 1049 (1100-3)	4180-3 2049 (2100-3)



NW-1, 13 JUN 2024 to 11 JUL 2024

NW-1, 13 JUN 2024 to 11 JUL 2024