

APP CRS	Rwy Idg	N/A
018°	TDZE	N/A
	Apt Elev	2131

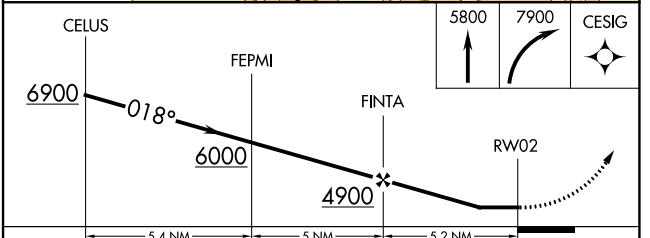
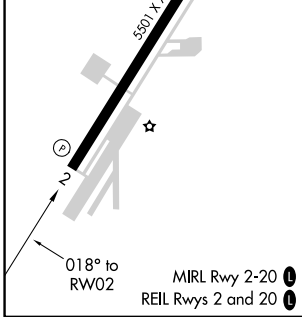
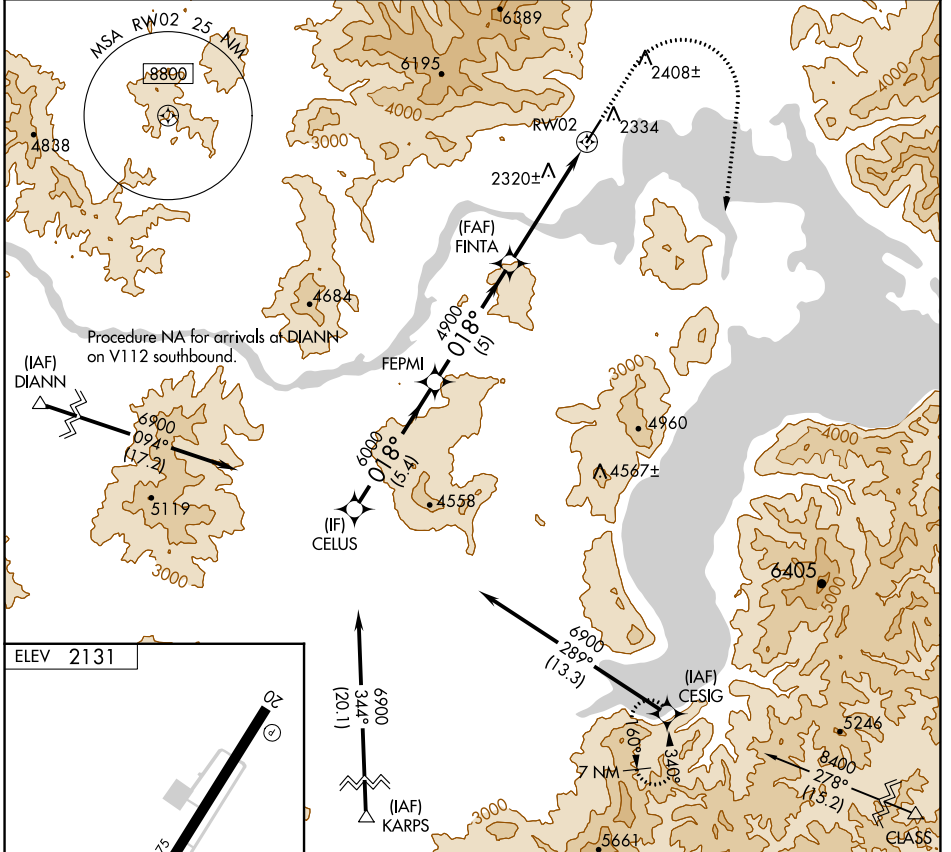
RNAV (GPS)-B

SANDPOINT (SZT')

⚠ DME/DME RNP-0.3 NA. Circling NA west of Rwy 2-20. When local altimeter setting not received, use Deer Park altimeter setting and increase all MDA 120 feet.

⚠ MISSED APPROACH: Climb to 5800 then climbing right turn to 7900 direct CESIG and hold.

AWOS-3 135.425	SEATTLE CENTER 123.95 290.55	UNICOM 122.7 (CTAF)
--------------------------	--	-------------------------------



CATEGORY	A	B	C	D
CIRCLING	3600-1¼ 1469 (1500-1¼)	3600-1½ 1469 (1500-1½)	3600-3 1469 (1500-3)	4180-3 2049 (2100-3)

NW-1, 13 JUN 2024 to 11 JUL 2024

NW-1, 13 JUN 2024 to 11 JUL 2024