

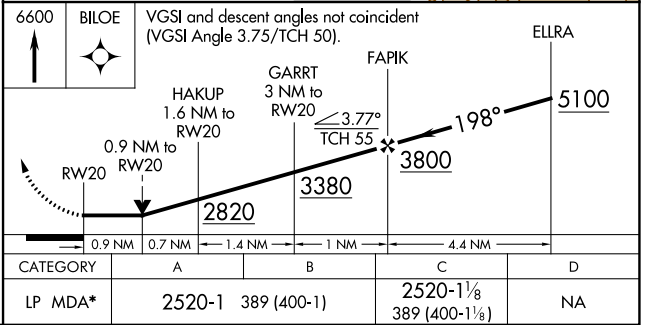
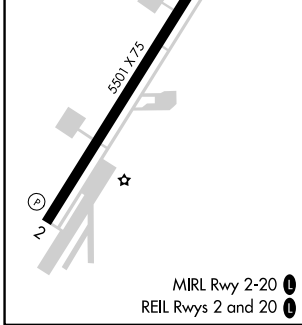
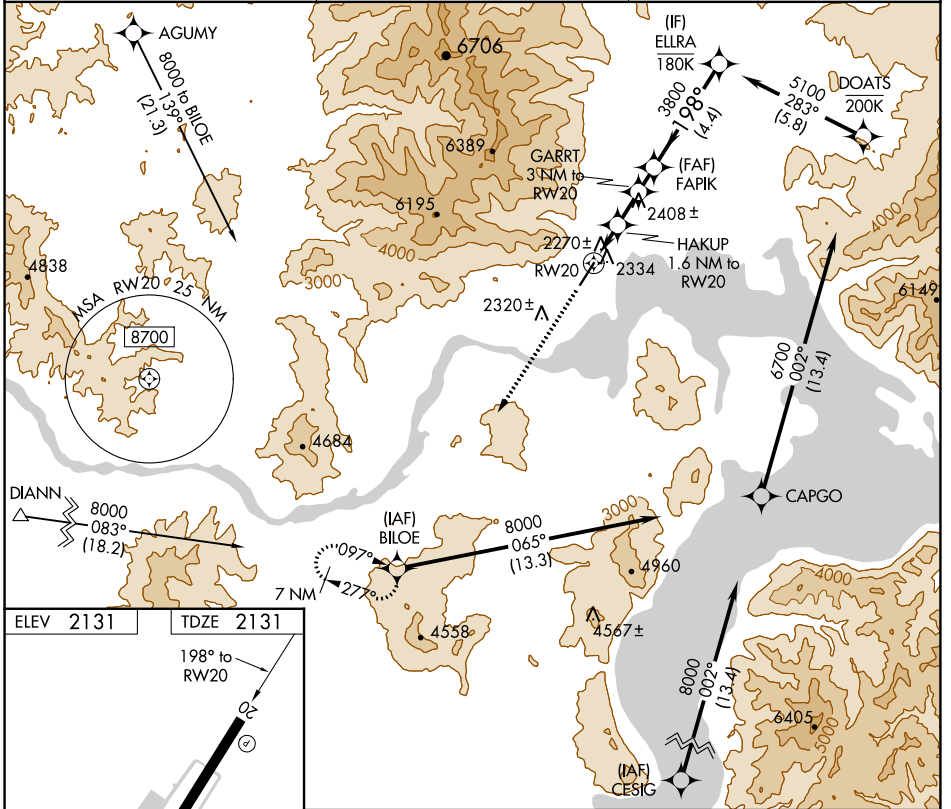
WAAS CH <b>99542</b> <b>W20A</b>	APP CRS <b>198°</b>	Rwy Idg TDZE Apt Elev	<b>5501</b> <b>2131</b> <b>2131</b>
--	------------------------	-----------------------------	---

# RNAV (GPS) Z RWY 20

SANDPOINT (SZT)

RNP APCH.	MISSED APPROACH: Climb to 6600 direct BILOE and hold, continue climb-in-hold to 6600. * Missed approach requires minimum climb of 318 feet per NM to 4500; if unable to meet climb gradient, see RNAV (GPS) Y RWY 20.
<p>▼</p> <p>▲ Rwy 20 helicopter visibility reduction below 3/4 SM NA. When local altimeter not received, procedure NA.</p>	

AWOS-3 <b>135.425</b>	SEATTLE CENTER <b>123.95 290.55</b>	UNICOM <b>122.7 (CTAF)</b> <b>①</b>
--------------------------	--	--



NW-1, 13 JUN 2024 to 11 JUL 2024

NW-1, 13 JUN 2024 to 11 JUL 2024