

WAAS CH <b>63142</b> <b>W16A</b>	APP CRS <b>161°</b>	Rwy Idg TDZE Apt Elev	<b>6400</b> <b>9934</b> <b>9934</b>
--	------------------------	-----------------------------	---

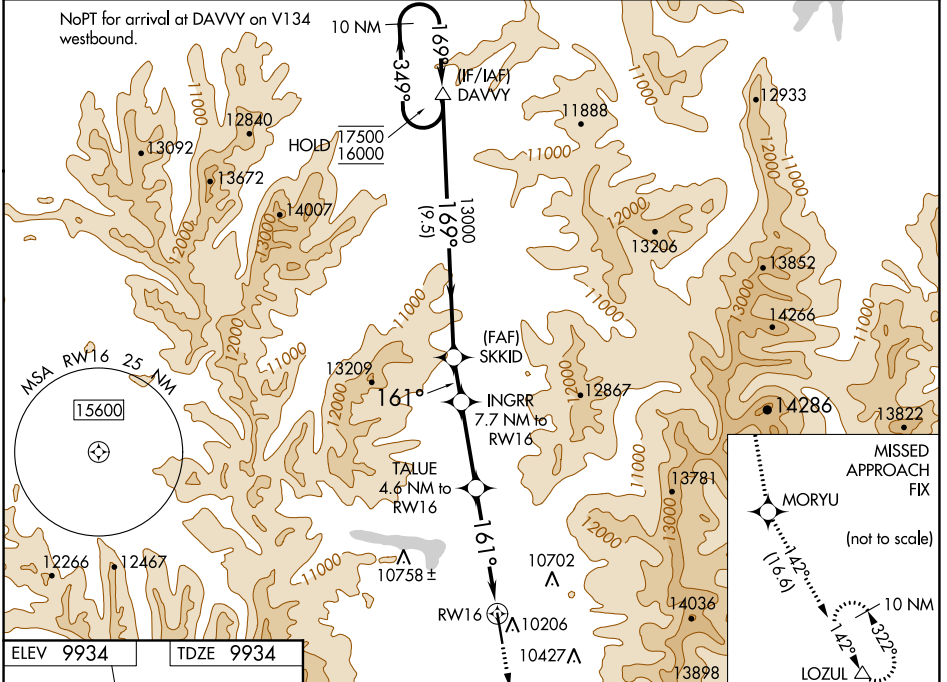
# RNAV (GPS) RWY 16

LAKE COUNTY (L.XV)

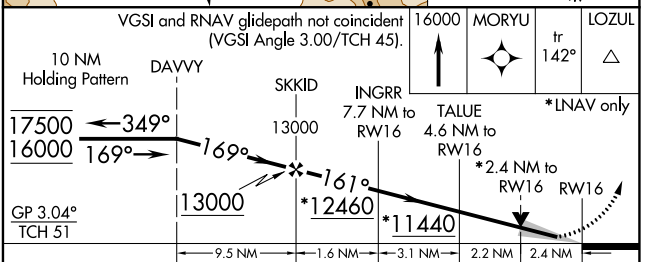
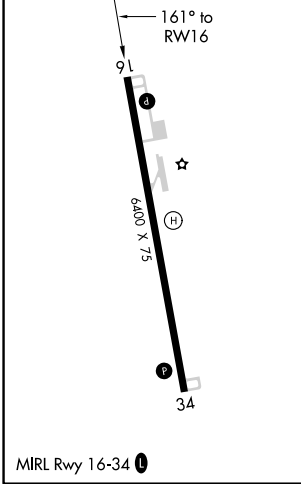
RNP APCH-GPS.  
 Baro-VNAV NA.  
 When local altimeter setting not received, procedure NA.

MISSED APPROACH: Climb to 16000 direct MORYU and on track 142° to LOZUL and hold, continue climb-in-hold to 16000.  
 #Missed approach requires minimum climb of 240 feet per NM to 12500.

ASOS <b>118.375</b>	DENVER CENTER <b>119.85 363.15</b>	UNICOM <b>122.8 (CTAF)</b>
------------------------	---------------------------------------	-------------------------------



ELEV 9934	TDZE 9934
-----------	-----------



CATEGORY	A	B	C	D
LPV DA#	10184-1 250 (300-1)			NA
LPV DA	10546-1¼ 612 (700-1¼)			NA
LNAV/VNAV DA	10542-1¾ 608 (700-1¾)			NA
LNAV MDA	10740-1 806 (900-1)	10740-1¼ 806 (900-1¼)	10740-2½ 806 (900-2½)	NA
CIRCLING	10740-1 806 (900-1)	11040-1½ 1106 (1200-1½)	12020-3 2086 (2100-3)	NA

SW-1, 13 JUN 2024 to 11 JUL 2024

SW-1, 13 JUN 2024 to 11 JUL 2024