

WAAS CH 93910 W27A	APP CRS 272°	Rwy Idg 4300 TDZE 22 Apt Elev 22
--	------------------------	---

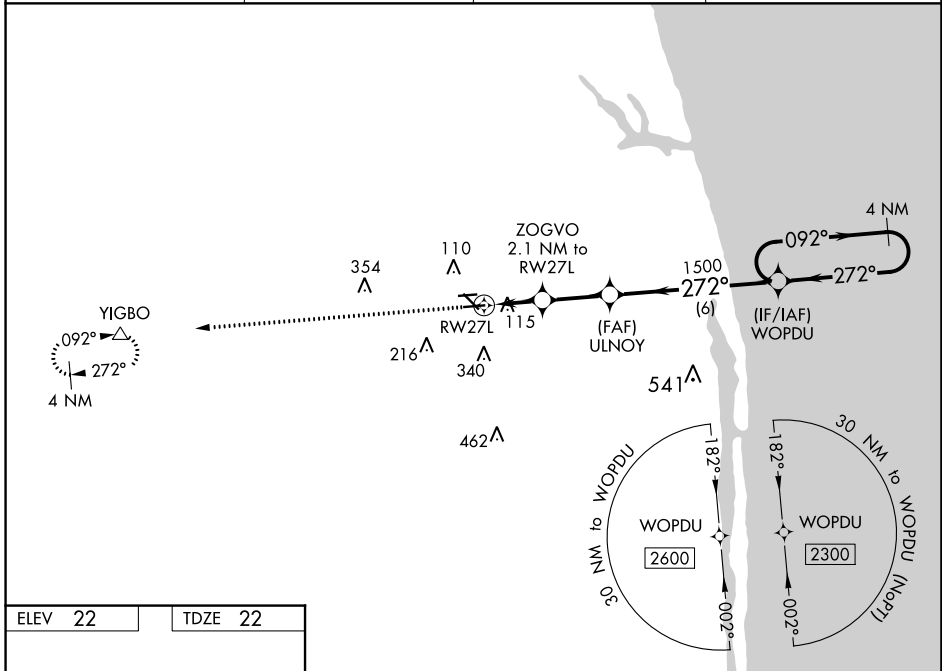
RNAV (GPS) RWY 27L

NORTH PALM BEACH COUNTY GENERAL AVIATION (F45)

⚠ Circling NA to Rwy 9L and 27R. For uncompensated Baro-VNAV systems, LNAV/VNAV NA below -1.5°C (5°F) or above 54°C (130°F). Baro-VNAV and VDP NA when using Palm Beach Intl altimeter setting. DME/DME RNP-0.3 NA. When local altimeter not received, use Palm Beach Intl altimeter setting and increase LPV DA to 369 feet and all visibilities 1/8 SM; increase LNAV/VNAV DA to 423 feet and all visibilities 1/8 SM; increase all MDA 40 feet and Cat C/D visibility 1/8 SM. Rwy 27L helicopter visibility reduction below 3/4 SM NA.

⚠ MISSED APPROACH: Climb to 2500 direct YIGBO and hold.

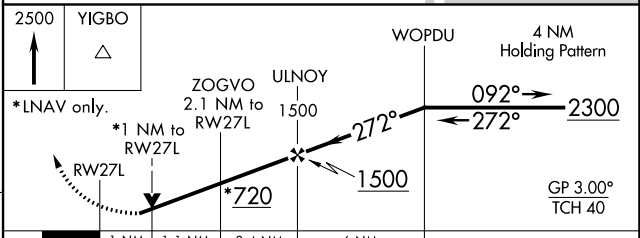
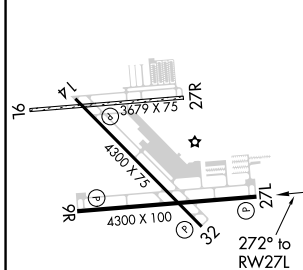
AWOS-3 119.975	PALM BEACH APP CON 128.3 317.4	CLNC DEL 120.825	UNICOM 123.075 (CTAF)
--------------------------	--	----------------------------	---------------------------------



SE-3, 13 JUN 2024 to 11 JUL 2024

SE-3, 13 JUN 2024 to 11 JUL 2024

ELEV 22	TDZE 22
----------------	----------------



CATEGORY	A	B	C	D
LPV DA		341-7/8	319 (400-7/8)	
LNAV/VNAV DA		395-1	373 (400-1)	
LNAV MDA		380-1	358 (400-1)	
C CIRCLING	460-1 438 (500-1)	480-1 458 (500-1)	700-2 678 (700-2)	720-2 1/4 698 (700-2 1/4)