

(ESTRR5.ESTRR) 24081

AL-9155 (FAA)

CONCORD-PADGETT RGNL (JQF)
CONCORD, NORTH CAROLINA

ESTRR FIVE DEPARTURE (RNAV)

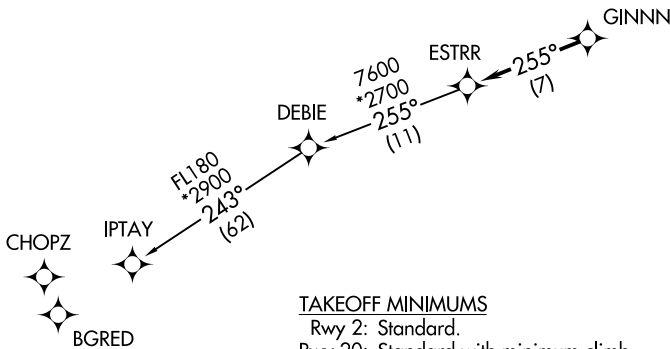
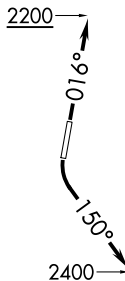
CHARLOTTE DEP CON
128.325 307.8
ATIS ★
133.675
CLNC DEL
118.55
CLNC DEL (when twr closed)
127.25
GND CON
121.85
CONCORD TOWER ★
134.65 (CTAF)
UNICOM
122.95

RNAV 1 - DME/DME/IRU or GPS.

RADAR required.

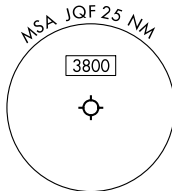
**TOP ALTITUDE:
3000**

- NOTE: For turbo jets only.
NOTE: If unable to accept climb rates, advise ATC on initial contact.
NOTE: Transponder code will be issued via PDC or Charlotte CLNC DEL.
NOTE: Upon reaching 10000 MSL, accelerate to and maintain 280K, if unable advise ATC.



TAKEOFF MINIMUMS

Rwy 2: Standard.
Rwy 20: Standard with minimum climb of 320' per NM to 2400.



NOTE: Chart not to scale.

DEPARTURE ROUTE DESCRIPTION

TAKEOFF RUNWAY 2: Climb on heading 016° to 2200, then on heading assigned by ATC, thence. . . .

TAKEOFF RUNWAY 20: Climbing left turn heading 150° to 2400, then on heading assigned by ATC, thence. . . .

. . . .on RADAR vectors to GINNN, then on track 255° to ESTRR, then on IPTAY Transition. Maintain 3000, expect clearance to filed altitude within 10 minutes after departure.

IPTAY TRANSITION (ESTRR5.IPTAY)

ESTRR FIVE DEPARTURE (RNAV)

(ESTRR5.ESTRR) 21MAR24

CONCORD, NORTH CAROLINA
CONCORD-PADGETT RGNL (JQF)

SE-2, 13 JUN 2024 to 11 JUL 2024

SE-2, 13 JUN 2024 to 11 JUL 2024