

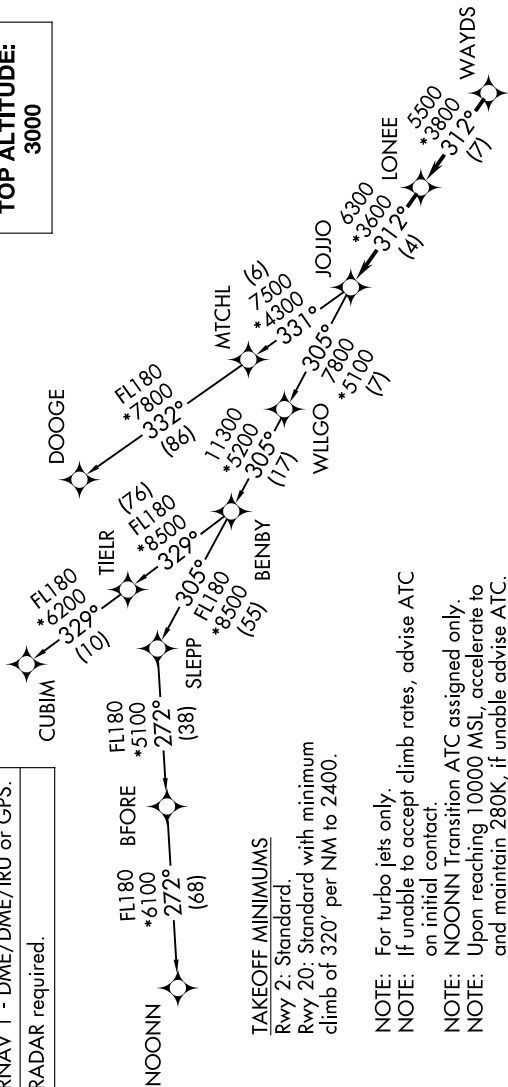
# JOJO FIVE DEPARTURE (RNAV)

SE-2, 13 JUN 2024 to 11 JUL 2024

RNAV 1 - DME/DME/IRU or GPS.  
RADAR required.

CHARLOTTE DEP CON  
128.325 307.8  
ATIS \*  
133.675  
CLNC DEL  
118.55  
CLNC DEL (when hvr closed)  
127.25  
GND CON  
121.85  
CONCORD TOWER \*  
134.65 (CTAF)  
UNICOM  
122.95

**TOP ALTITUDE:  
3000**



**TAKEOFF MINIMUMS**

Rwy 2: Standard.  
Rwy 20: Standard with minimum climb of 320' per NM to 2400.

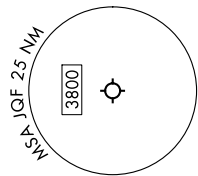
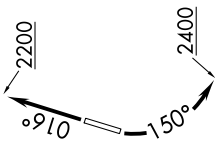
- NOTE: For turbo jets only.
- NOTE: If unable to accept climb rates, advise ATC on initial contact.
- NOTE: NOONN Transition ATC assigned only.
- NOTE: Upon reaching 10000 MSL, accelerate to and maintain 280K, if unable advise ATC.

**DEPARTURE ROUTE DESCRIPTION**

**TAKEOFF RUNWAY 2:** Climb on heading 016° to 2200, then on heading assigned by ATC, thence. . . .  
**TAKEOFF RUNWAY 20:** Climbing left turn heading 150° to 2400, then on heading assigned by ATC, thence. . . .

. . . on RADAR vectors to WAYDS, then on depicted route to JOJO. Then on assigned transition. Maintain 3000, expect filed altitude within 10 minutes after departure.

CUBIM TRANSITION (JOJO5.CUBIM)  
DOOGE TRANSITION (JOJO5.DOOGE)  
NOONN TRANSITION (JOJO5.NOONN)



NOTE: Chart not to scale.

# JOJO FIVE DEPARTURE (RNAV)

SE-2, 13 JUN 2024 to 11 JUL 2024