

(KRITR6.KRITR) 24081

# KRITR SIX DEPARTURE (RNAV)

AL-9155 (FAA)

CONCORD-PADGETT RGNL (JQF)

CONCORD, NORTH CAROLINA

CHARLOTTE DEP CON  
 128.325 307.8  
 ATIS ★  
 133.675  
 CLNC DEL  
 118.55  
 CLNC DEL (when twr closed)  
 127.25  
 GND CON  
 121.85  
 CONCORD TOWER ★  
 134.65 (CTAF)  
 UNICOM  
 122.95

**TOP ALTITUDE:  
 3000**

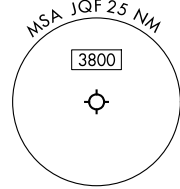
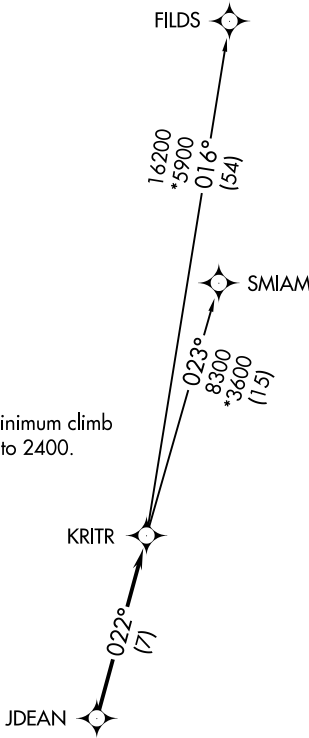
RNAV 1 - DME/DME/IRU or GPS.

RADAR required.

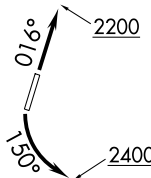
### TAKEOFF MINIMUMS

Rwy 2: Standard.

Rwy 20: Standard with minimum climb of 320' per NM to 2400.



- NOTE: For turbo jets only.
- NOTE: Transponder code will be issued via PDC or Charlotte CLNC DEL.
- NOTE: If unable to accept climb rates, advise ATC on initial contact.
- NOTE: Upon reaching 10000 MSL, accelerate to and maintain 280K, if unable advise ATC.



NOTE: Chart not to scale.



### DEPARTURE ROUTE DESCRIPTION

**TAKEOFF RUNWAY 2:** Climb on heading 016° to 2200, then on heading assigned by ATC, thence. . . .

**TAKEOFF RUNWAY 20:** Climbing left turn heading 150° to 2400, then on heading assigned by ATC, thence. . . .

. . . .on RADAR vectors to JDEAN, then on track 022° to KRITR, then on assigned transition. Maintain 3000. Expect clearance to filed altitude within 10 minutes after departure.

FILDS TRANSITION (KRITR6.FILDS)

SMIAM TRANSITION (KRITR6.SMIAM)

# KRITR SIX DEPARTURE (RNAV)

(KRITR6.KRITR) 21MAR24

CONCORD, NORTH CAROLINA

CONCORD-PADGETT RGNL (JQF)

SE-2, 13 JUN 2024 to 11 JUL 2024

SE-2, 13 JUN 2024 to 11 JUL 2024