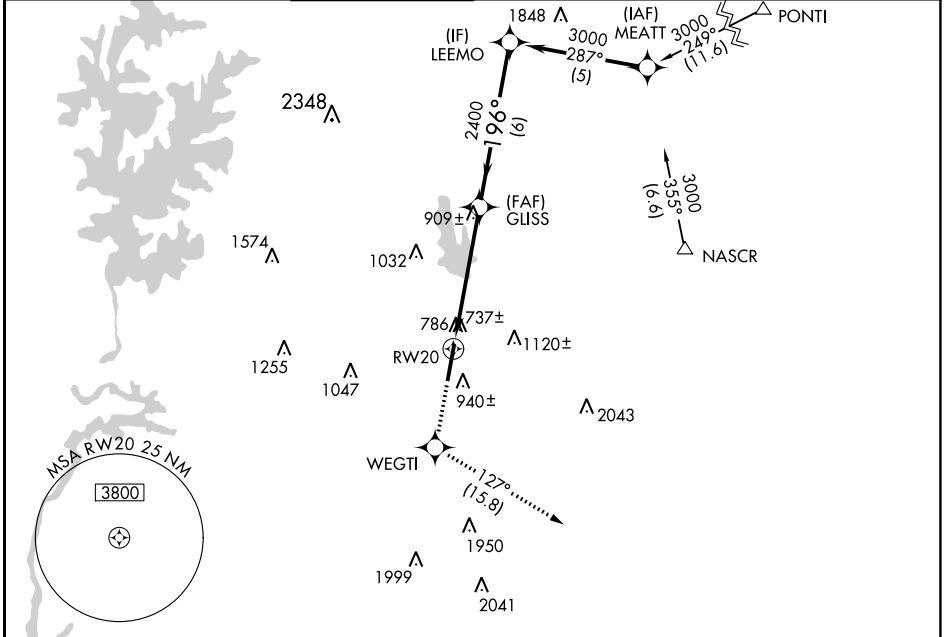


WAAS CH 56499 W20A	APP CRS 196°	Rwy Idg TDZE Apt Elev	6350 699 704
--	------------------------	-----------------------------	---

RNAV (GPS) RWY 20

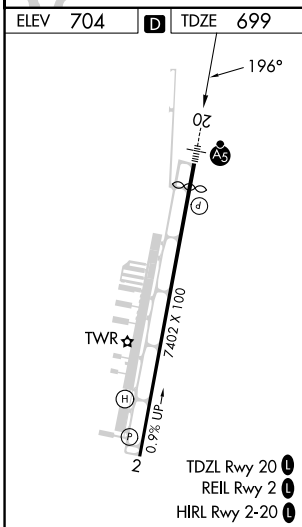
CONCORD-PADGETT RGNL (JQF)

RNP APCH-GPS.				MALSR	MISSED APPROACH: Climb to 3000 direct WEGTI and on track 127° to LOCAS and hold.	
⚠ For uncompensated Baro-VNAV systems, LNAV/VNAV NA below -16°C or above 54°C. For inop ALS, increase LNAV/VNAV visibility all Cats to 1½ SM. Rwy 20 helicopter visibility reduction below ¾ SM NA.						
ATIS★ 133.675	CHARLOTTE APP CON 128.325 307.8	CONCORD TOWER★ 134.65 (CTAF)	GND CON 121.85	CLNC DEL 118.55	CLNC DEL 127.25 (when twr closed)	UNICOM 122.95



SE-2, 13 JUN 2024 to 11 JUL 2024

SE-2, 13 JUN 2024 to 11 JUL 2024



ELEV 704	D	TDZE 699				
3000	WEGTI	LOCAS	LEEMO			
↑	✦	△	3000			
			tr 127°			
*LNAV only.			GLISS			
RWY 20			2400			
*1.8 NM to RWY 20			196°			
1.8 NM			2400			
3.3 NM			6 NM			
TWR★			GP 3.00° TCH 44			
7402 X 100						
0.9% UP						
2						
TDZL Rwy 20			1			
REIL Rwy 2			1			
HIRL Rwy 2-20			1			
CIRCLING			1			
CATEGORY	A	B	C	D		
LPV DA		1026-¾	327 (400-¾)			
LNAV/VNAV DA		1222-1¼	523 (600-1¼)			
LNAV MDA	1300-¾	601 (600-¾)	1300-1⅜	601 (600-1⅜)		
CIRCLING	1300-1	596 (600-1)	1480-2¼	1480-2½		
			776 (800-2¼)	776 (800-2½)		