

RNAV (GPS) Y RWY 21

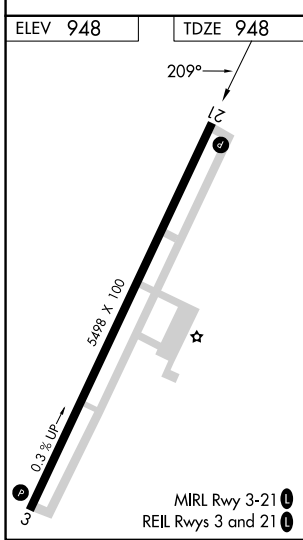
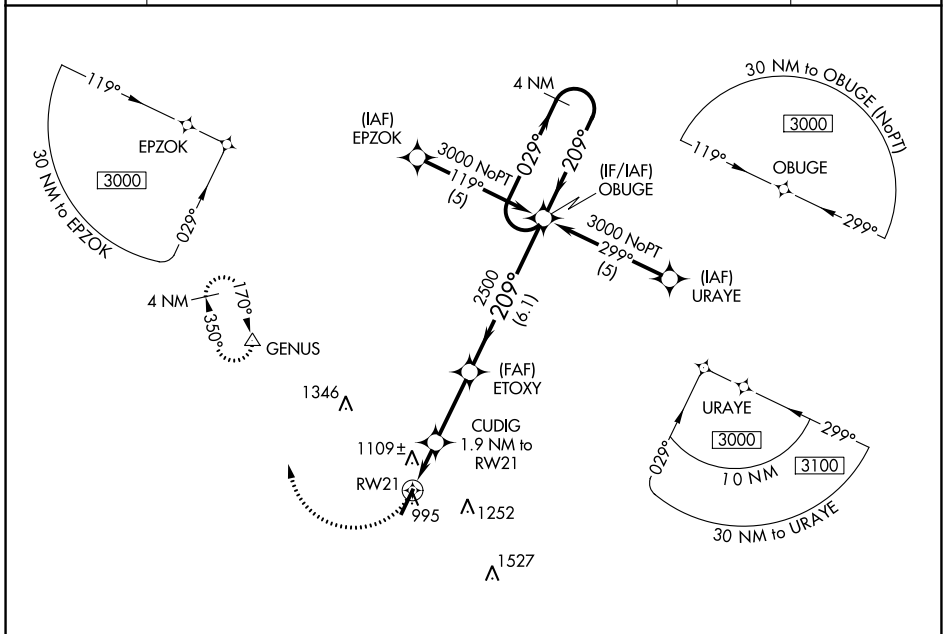
GEORGETOWN-SCOTT COUNTY RGNL (27K)

APP CRS	Rwy Idg	5498
209°	TDZE	948
	Apt Elev	948

NA DME/DME RNP-0.3 NA. VDP NA with Lexington altimeter setting. When local altimeter setting not received, use Lexington altimeter setting and increase all MDAs 40 feet, increase LNAV Cats C/D and Circling Cat D visibility ¼ SM.

MISSED APPROACH: Climbing right turn to 3000 direct GENUS and hold.

AWOS-3 119.975	LEXINGTON APP CON 120.15 259.3 (040° - 220°) 120.75 298.9 (221° - 039°)	CLNC DEL 127.425	UNICOM 123.0 (CTAF)
--------------------------	---	----------------------------	-------------------------------



	3000 GENUS				OBUGE	4 NM Holding Pattern
		CUDIG 1.9 NM to RW21	ETOXY			
		1.2 NM to RW21	3.04° TCH 30	209°	3000	
		1.2 NM	0.7 NM	2.8 NM	6.1 NM	
CATEGORY	A	B	C	D		
LNAV MDA	1360-1	412 (500-1)	1360-1¼	412 (500-1¼)		
CIRCLING	1420-1	472 (500-1)	1560-1¾ 612 (700-1¾)	1660-2¼ 712 (800-2¼)		

SE-1, 13 JUN 2024 to 11 JUL 2024

SE-1, 13 JUN 2024 to 11 JUL 2024