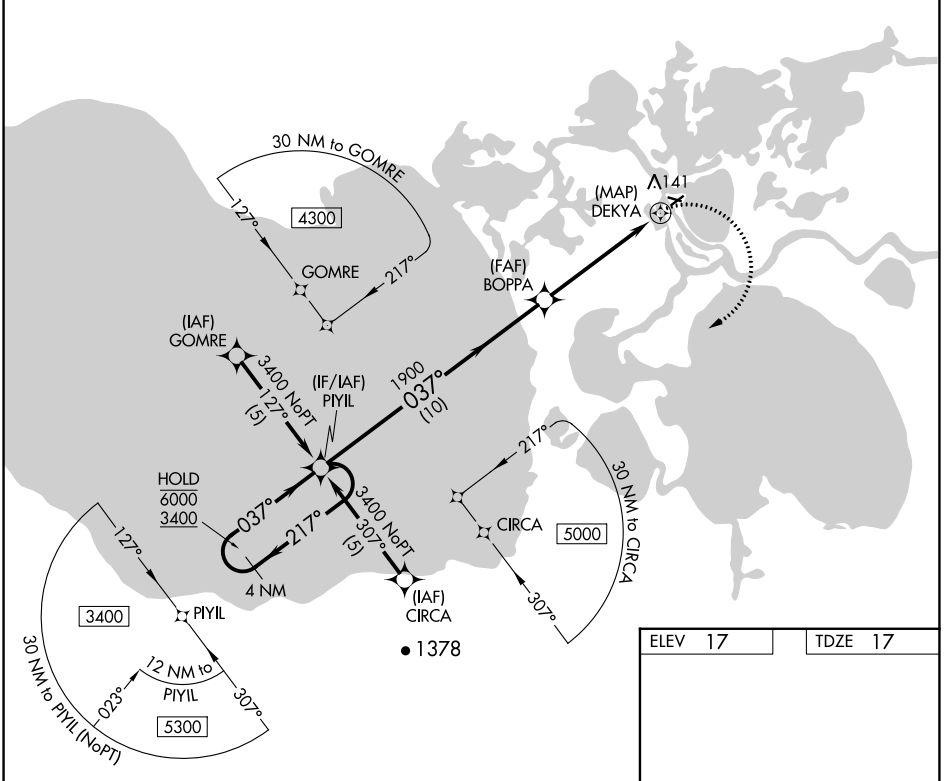


APP CRS	Rwy Idg	<b>3002</b>
<b>037°</b>	TDZE	<b>17</b>
	Apt Elev	<b>17</b>

# RNAV (GPS) RWY 4

SELAWIK (WLK) (PASK)

RNP APCH.		MISSED APPROACH: Climbing right turn to 3400 direct PIYIL and hold.	
<p>▼ Circling Rwy 9, 27 NA at night. Rwy 4 helicopter visibility reduction below ¾ SM NA.</p>			
AWOS-3P	ANCHORAGE CENTER	KOTZEBUE RADIO	CTAF
<b>135.65</b>	<b>119.2 263.0</b>	<b>122.5</b>	<b>122.7 0</b>

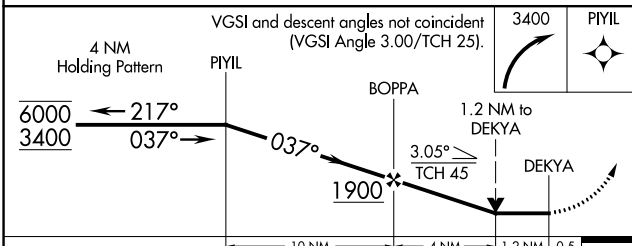


AK, 16 MAY 2024 to 11 JUL 2024

AK, 16 MAY 2024 to 11 JUL 2024

ELEV 17	TDZE 17
---------	---------

MRL Rwy 9-27 and 4-22 0



CATEGORY	A	B	C	D
LNVA MDA	420-1	403 (500-1)	420-1¼	403 (500-1¼)
CIRCLING	480-1 463 (500-1)	580-1 563 (600-1)	580-1½ 563 (600-1½)	580-2 563 (600-2)