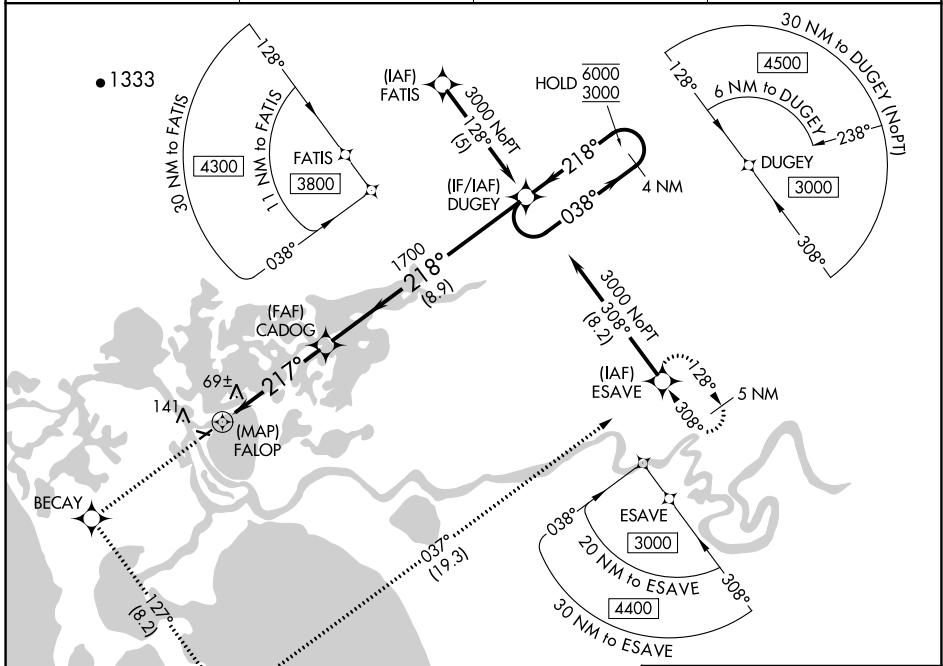


APP CRS	Rwy Idg	3002
217°	TDZE	17
	Apt Elev	17

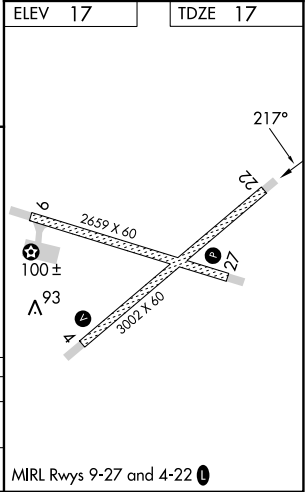
RNAV (GPS) Y RWY 22

SELAWIK (WLK) (PASK)

RNP APCH. ▼ Circling Rwy 9, 27 NA at night.		MISSED APPROACH: Climb to 3000 direct BECAY and left turn on track 127° to APACU and left turn on track 037° to ESAVE and hold.	
AWOS-3P 135.65	ANCHORAGE CENTER 119.2 263.0	KOTZEBUE RADIO 122.5	CTAF 122.7



ELEV	17	TDZE	17	
3000	BECAY	APACU	ESAVE	
↑	tr 127°	tr 037°		
<p>CADOG</p> <p>FALOP ≤ 3.05° TCH 45</p> <p>217° 1700</p> <p>038° 6000 / 218° 3000</p> <p>4 NM Holding Pattern</p> <p>0.5 4.6 NM 8.9 NM</p>				
CATEGORY	A	B	C	D
LNAV MDA	320-1 303 (400-1)			
CIRCLING	480-1 463 (500-1)	580-1 563 (600-1)	580-1½ 563 (600-1½)	580-2 563 (600-2)



MIRL Rwy 9-27 and 4-22

AK, 16 MAY 2024 to 11 JUL 2024

AK, 16 MAY 2024 to 11 JUL 2024