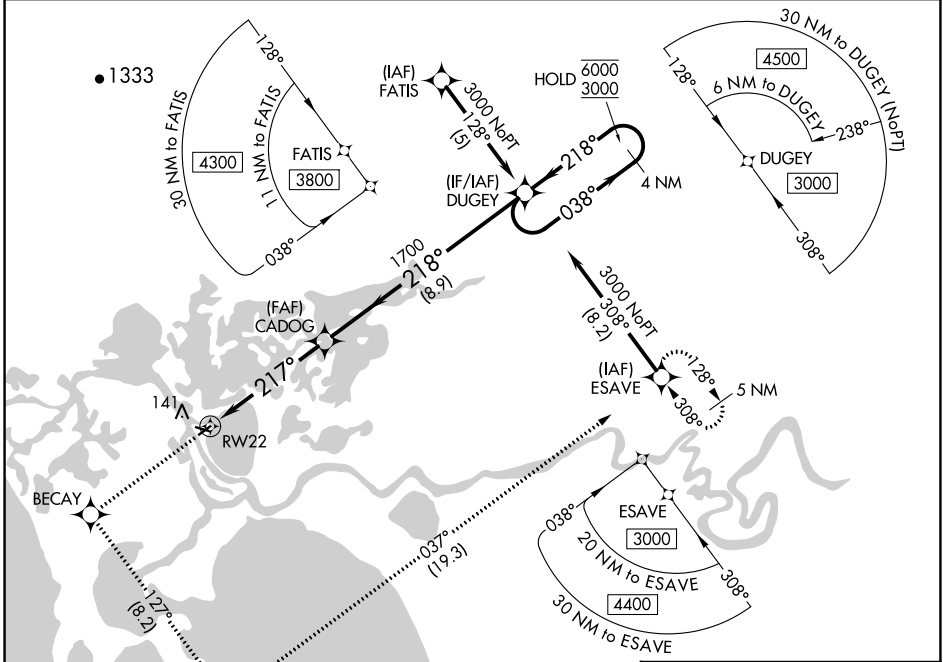


WAAS CH 40404 W22A	APP CRS 217°	Rwy Idg TDZE Apt Elev	3002 17 17
--	------------------------	-----------------------------	---------------------------------------

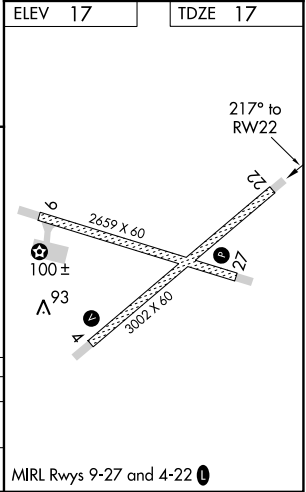
RNAV (GPS) Z RWY 22

SELAWIK (WLK) (PASK)

RNP APCH. ▼ For uncompensated Baro-VNAV systems, LNAV/VNAV NA below -25°C or above 49°C.		MISSED APPROACH: Climb to 3000 direct BECAY and left turn on track 127° to APACU and left turn on track 037° to ESAVE and hold.	
AWOS-3P 135.65	ANCHORAGE CENTER 119.2 263.0	KOTZEBUE RADIO 122.5	CTAF 122.7



ELEV 17	TDZE 17			
3000 BECAY	APACU	ESAVE		
↑	tr 127°	tr 037°		
DUGEY 4 NM Holding Pattern				
CADOG 1700 RW22 217° 038° → 6000 ← 218° 3000 GP 3.00° TCH 45				
5.1 NM 8.9 NM				
CATEGORY	A	B	C	D
LPV DA		267-1	250 (300-1)	
LNAV/VNAV DA		364-1¼	347 (400-1¼)	



AK, 16 MAY 2024 to 11 JUL 2024

AK, 16 MAY 2024 to 11 JUL 2024

MIRL Rwy 9-27 and 4-22