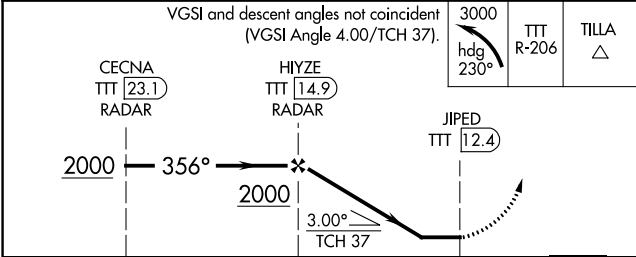
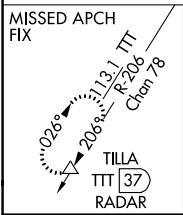
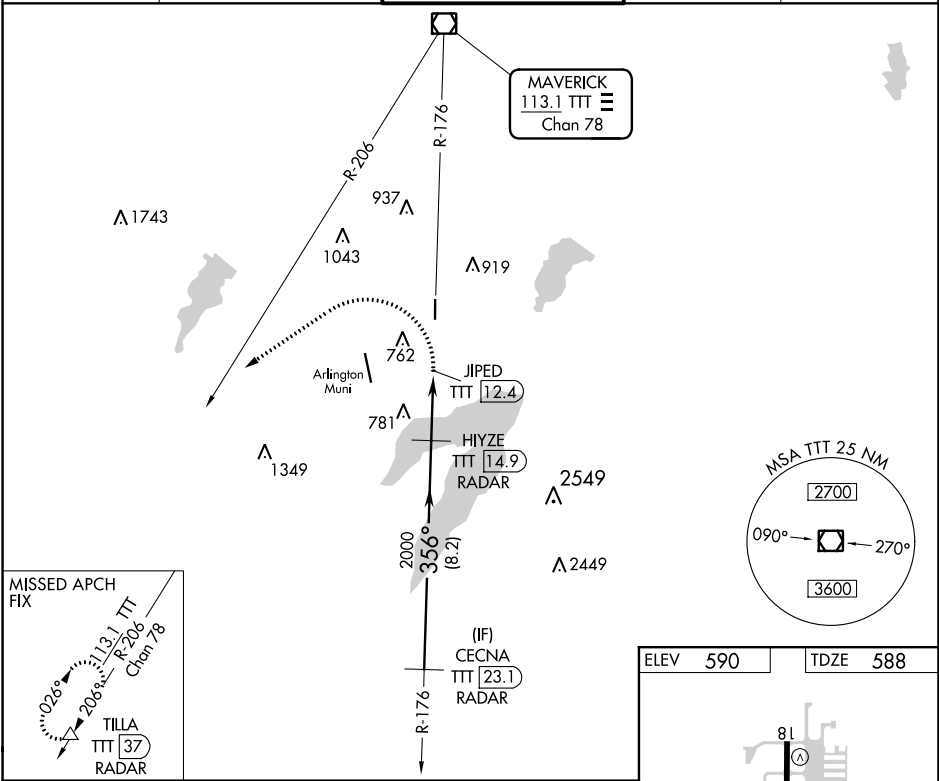


VOR/DME TTT 113.1 Chan 78	APP CRS 356°	Rwy Idg 4001 TDZE 588 Apt Elev 590
---	------------------------	---

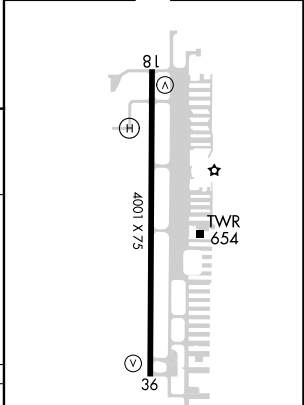
VOR RWY 36

GRAND PRAIRIE MUNI (GPM)

RADAR and DME required.		MISSED APPROACH: Climbing left turn to 3000 on heading 230° and TTT VOR/DME R-206 to TILLA/37 DME/RADAR and hold.		
Circling Rwy 18 NA at night.		GRAND PRAIRIE TOWER * 128.55 (CTAF) ①	GND CON 121.15	UNICOM 123.075



ELEV 590	TDZE 588
----------	----------



CATEGORY	A	B	C	D
S-36	1040-2½	452 (500-2½)		NA
CIRCLING	1100-2½ 510 (600-2½)	1280-2½ 690 (700-2½)		NA

REIL Rwy 36 ①
 MIRL Rwy 18-36 ①

SC-2, 13 JUN 2024 to 11 JUL 2024

SC-2, 13 JUN 2024 to 11 JUL 2024