

GARLAND FIVE DEPARTURE

MIDLOTHIAN/WAXAHACHIE, TEXAS

SC-2, 13 JUN 2024 to 11 JUL 2024

REGIONAL DEP CON
125.2 343.65
CTAF
122.975

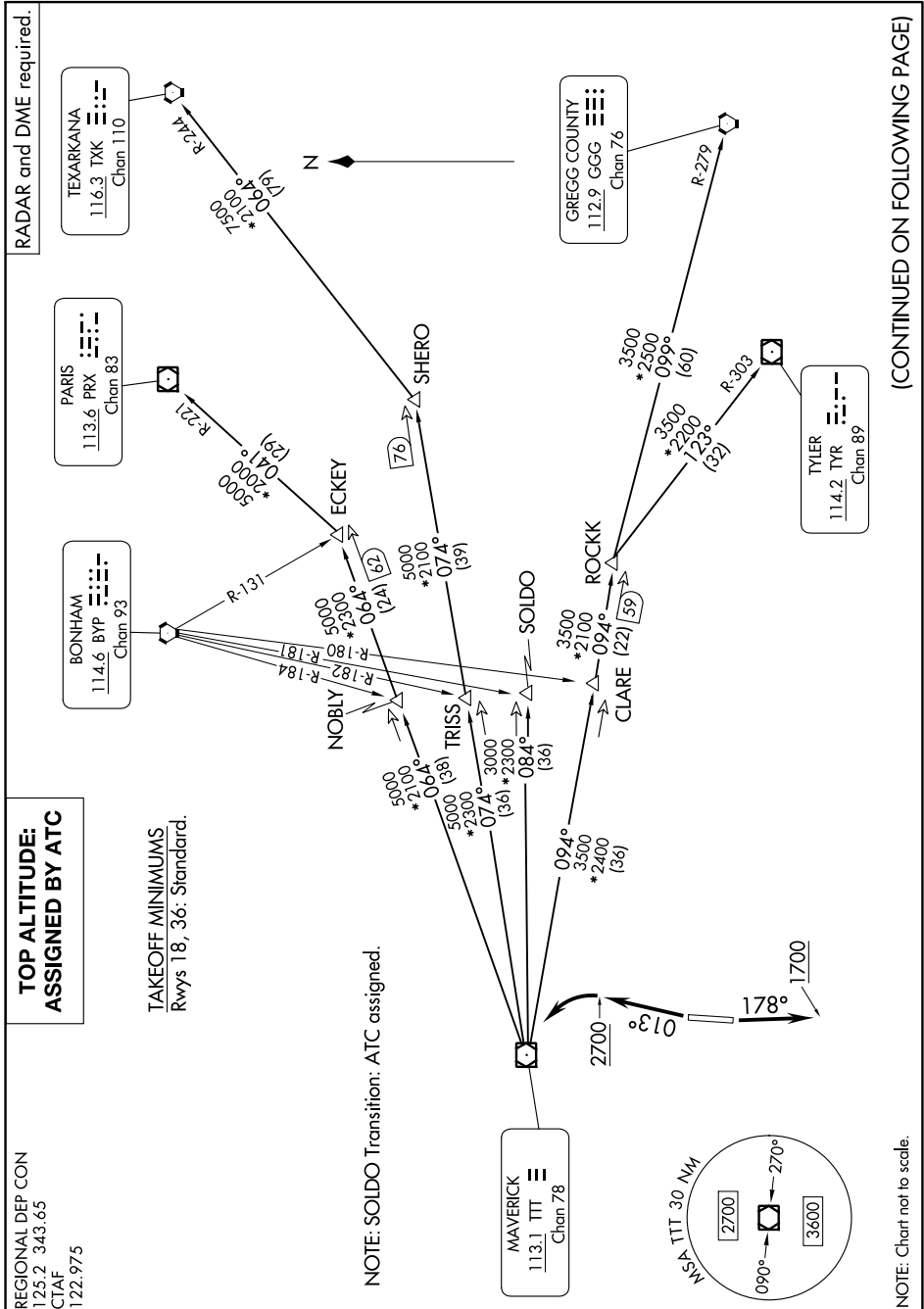
**TOP ALTITUDE:
ASSIGNED BY ATC**

TAKEOFF MINIMUMS
Rwys 18, 36: Standard.

NOTE: SOLDO Transition: ATC assigned.

RADAR and DME required.

(CONTINUED ON FOLLOWING PAGE)



SC-2, 13 JUN 2024 to 11 JUL 2024