

APP CRS	Rwy Idg	2441
322°	TDZE	7
	Apt Elev	7

RNAV (GPS) RWY 31

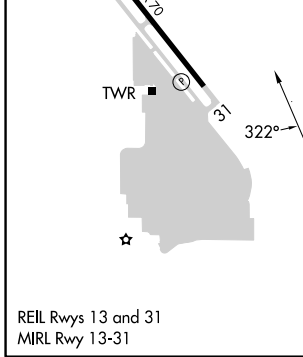
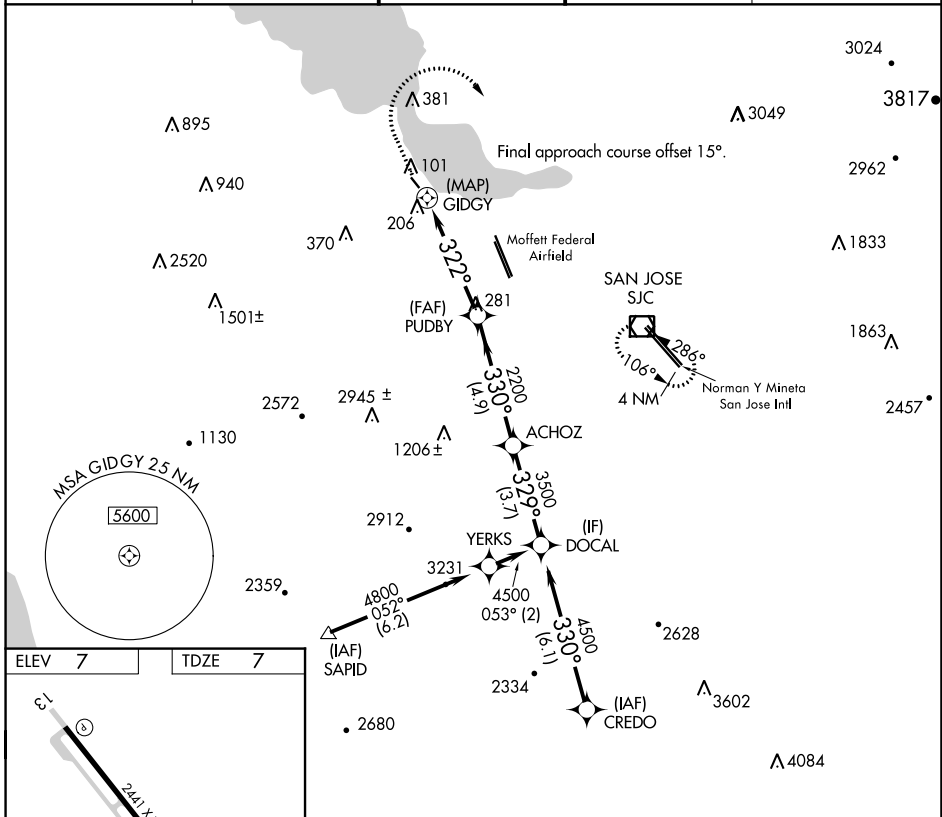
PALO ALTO (PAO)

RNP APCH

⚠ Circling NA southwest of Rwy 13-31. Rwy 31 helicopter visibility reduction below 1 SM NA. Procedure NA at night. When control tower closed, use Norman Y Mineta San Jose Intl altimeter setting and increase all MDAs 40 feet.

MISSED APPROACH: Climb to 1400 then climbing right turn to 3000 direct SJC VOR/DME and hold.

ATIS 135.275	NORCAL APP CON 121.3 270.35	PALO ALTO TOWER* 118.6 (CTAF)	GND CON 125.0	UNICOM 122.95
------------------------	---------------------------------------	--	-------------------------	-------------------------



ELEV 7	TDZE 7			
1400	3000	SJC		
↑	↷	☐		
GIDGY → 322° → PUDBY → 330° → ACHOZ → 329° → DOCAL → 4500				
GIDGY → 322° → PUDBY → 330° → ACHOZ → 3500 → DOCAL → 4500				
0.5	4.6 NM	4.9 NM	3.7 NM	
CATEGORY	A	B	C	D
LNAV MDA	460-1	453 (500-1)	NA	
☑ CIRCLING	460-1	520-1	NA	
	453 (500-1)	513 (600-1)		

SW-2, 13 JUN 2024 to 11 JUL 2024

SW-2, 13 JUN 2024 to 11 JUL 2024