

APP CRS 297°	Rwy Idg 2621
	TDZE 5
	Apt Elev 5

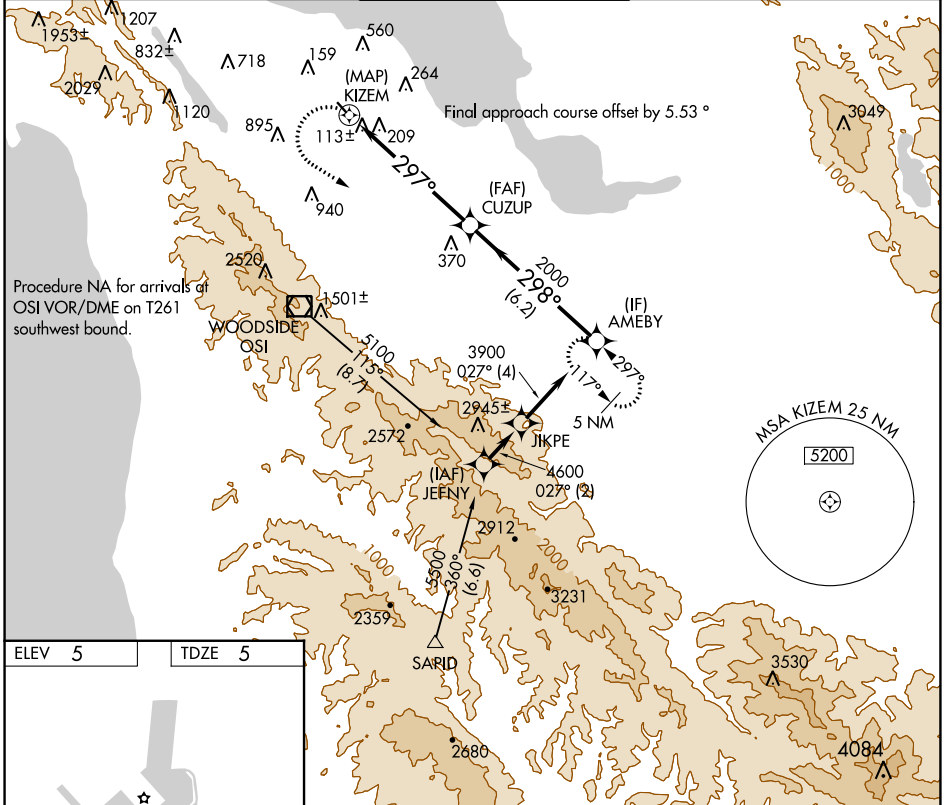
RNAV (GPS) Y RWY 30

SAN CARLOS (SQL)

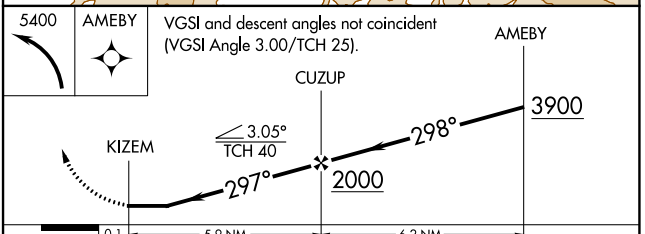
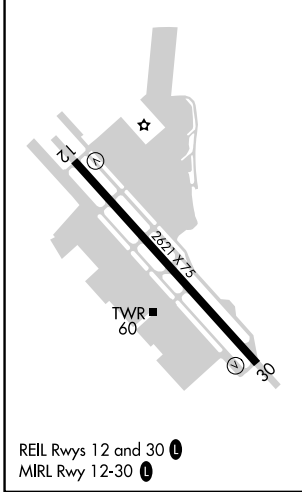
▼ DME/DME RNP-0.3 NA. When local altimeter setting not received, use San Francisco Intl altimeter setting and increase all MDA 40 feet.
▲ Rwy 30 visibility reduction by helicopters below 1 SM NA.
 Circling NA west of Rwy 12-30.

MISSED APPROACH: Climbing left turn to 5400 direct AMEBY and hold, continue climb-in-hold to 5400.

ATIS 125.9	NORCAL APP CON 133.95 317.6	SAN CARLOS TOWER ★ 119.0 (CTAF) 326.2	GND CON 121.6	UNICOM 122.95
----------------------	---------------------------------------	---	-------------------------	-------------------------



ELEV 5	TDZE 5
--------	--------



CATEGORY	A	B	C	D
LNAV MDA	1260-1¼	1255 (1300-1¼)		NA
CIRCLING	1260-1¼ 1255 (1300-1¼)	1260-1½ 1255 (1300-1½)		NA

SW-2, 13 JUN 2024 to 11 JUL 2024

SW-2, 13 JUN 2024 to 11 JUL 2024