

VOR/DME GEE 108.2 Chan 19	APP CRS 085°	Rwy Idg TDZE Apt Elev 814	N/A N/A 814
-----------------------------------------------	------------------------	-------------------------------------------	----------------------------------------

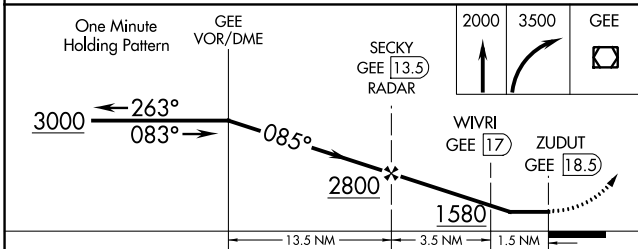
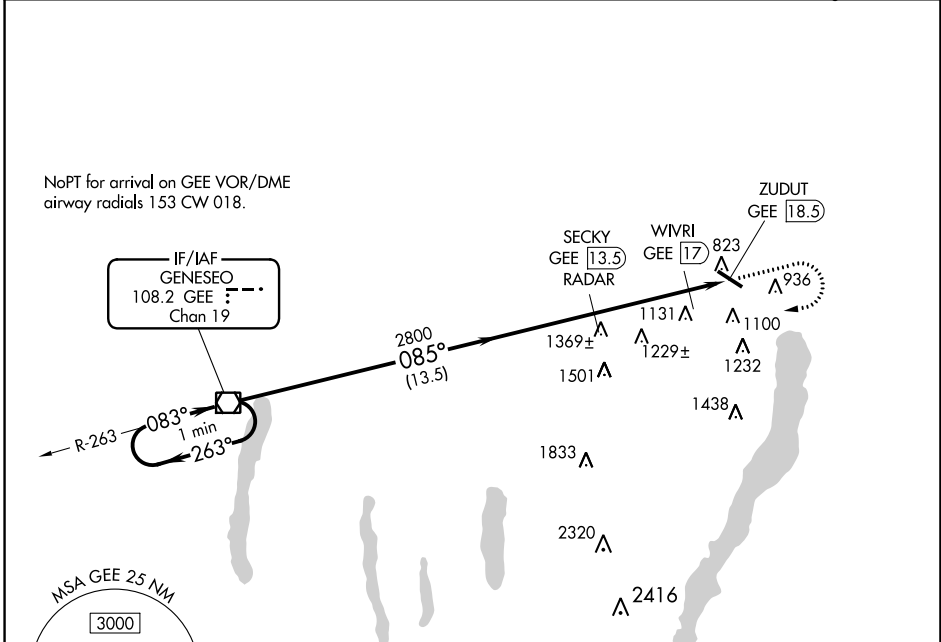
VOR-A
CANANDAIGUA (IUA)

DME or RADAR required.

When local altimeter setting not received, use Rochester altimeter setting and increase all MDAs 100 feet and Circling visibility all Cats ¼ SM, increase WIVRI Fix Circling minimums visibility Cat C ½ SM.

MISSED APPROACH: Climb to 2000 then climbing right turn to 3500 direct GEE VOR/DME and hold.

AWOS-3P 118.675	ROCHESTER APP CON 119.55 269.6	UNICOM 122.8 (CTAF) 0
---------------------------	------------------------------------------	---------------------------------



CATEGORY	A	B	C	D
C CIRCLING	1580-1	766 (800-1)	1580-2 ¼ 766 (800-2 ¼)	NA
WIVRI FIX MINIMUMS				
C CIRCLING	1500-1	686 (700-1)	1540-2 726 (800-2)	NA

ELEV 814					
FAF to MAP 5 NM					
Knots	60	90	120	150	180
Min:Sec	5:00	3:20	2:30	2:00	1:40

NE-2, 13 JUN 2024 to 11 JUL 2024

NE-2, 13 JUN 2024 to 11 JUL 2024