

| | | |
|-------------|----------|-------------|
| APP CRS | Rwy Idg | 4100 |
| 083° | TDZE | 3669 |
| | Apt Elev | 3703 |

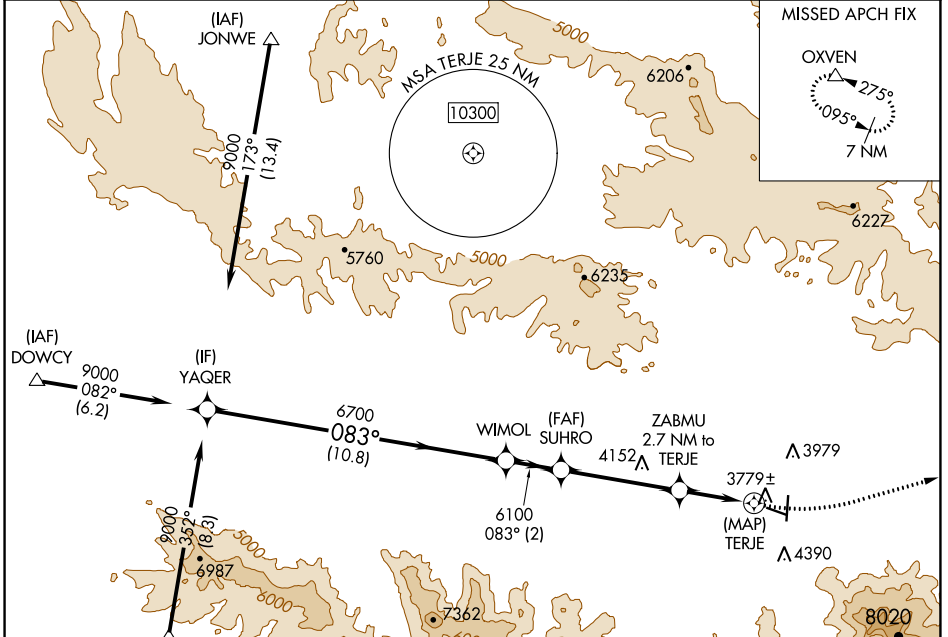
RNAV (GPS) Y RWY 9

GRANT COUNTY RGNL/OGLIVIE FLD (GCD)

⚠ When local altimeter setting not received, procedure NA.
⚠ Circling NA south of Rwy 9-27. DME/DME RNP-0.3 NA.
 Helicopter visibility reduction below 3/4 SM not authorized.

MISSED APPROACH: Climbing left turn to 12000 direct OXVEN and hold, continue climb-in-hold to 12000.

| | | |
|--------------------------|--|--|
| AWOS-3 118.375 | SEATTLE CENTER 128.15 257.75 | UNICOM 122.8 (CTAF) 0 |
|--------------------------|--|--|



NW-1, 13 JUN 2024 to 11 JUL 2024

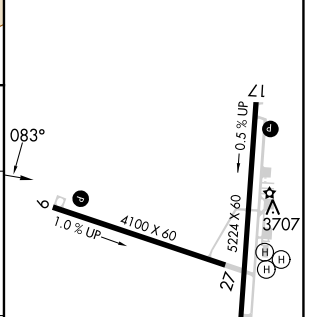
NW-1, 13 JUN 2024 to 11 JUL 2024

| | |
|-----------|-----------|
| ELEV 3703 | TDZE 3669 |
|-----------|-----------|



| | |
|-----------|-----------|
| ELEV 3703 | TDZE 3669 |
|-----------|-----------|

| | | | | | |
|-------------------|--|--------------|-----------------------|--------|-------|
| YAQER | VGSIs and descent angles not coincident (VGSIs Angle 3.00/TCH 45). | | | 12000 | OXVEN |
| 9000 | WIMOL | SUHRO | ZABMU 2.7 NM to TERJE | | |
| 083° | 6700 | 6100 | 4700 | | 083° |
| Procedure Turn NA | | 3.03° TCH 40 | | | |
| | 10.8 NM | 2 NM | 4.3 NM | 2.7 NM | 0.5 |



| CATEGORY | A | B | C | D |
|----------|-----------------------|-------------------------------|-------------------------------|----|
| LNVA MDA | 4280-1 | 611 (600-1) | 4280-1 3/4 611 (600-1 3/4) | NA |
| CIRCLING | 4280-1 577 (600-1) | 4520-1 1/4 817 (900-1 1/4) | 5160-3 1457 (1500-3) | NA |

REIL Rwy 17 and 9 **0**
 MIRL Rwy 9-27 and 17-35 **0**