

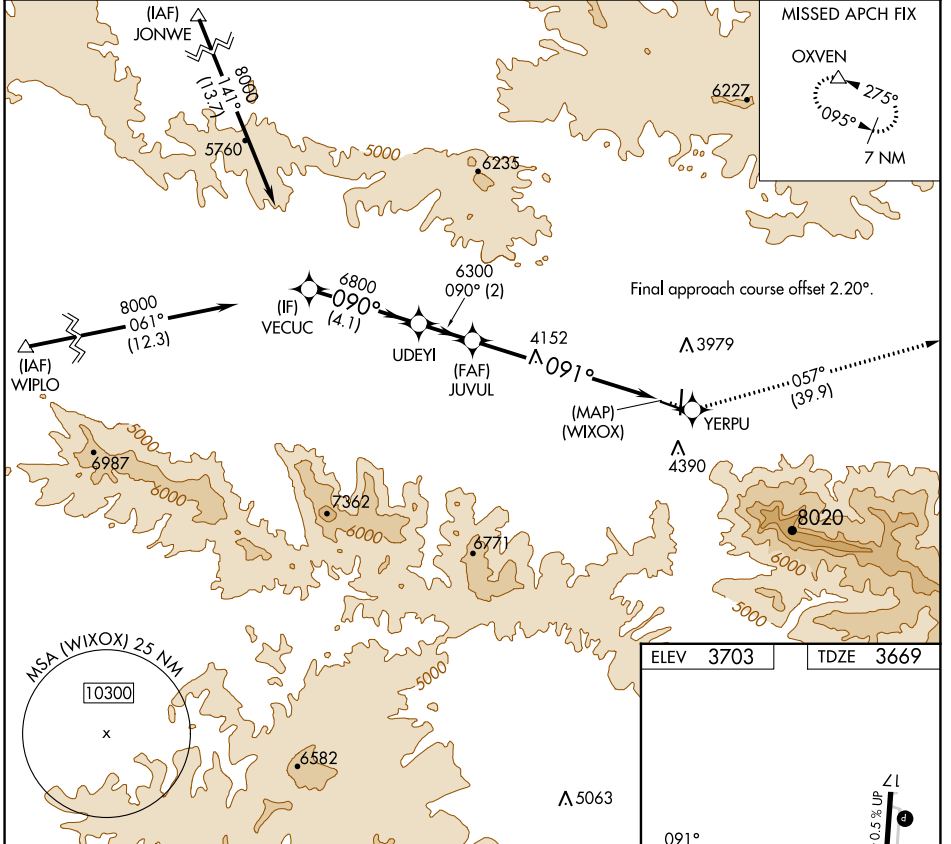
| | | |
|--|------------------------|---|
| WAAS CH 73010 W09A | APP CRS 091° | Rwy Idg 4100 TDZE 3669 Apt Elev 3703 |
|--|------------------------|---|

RNAV (GPS) Z RWY 9

GRANT COUNTY RGNL/OGLIVIE FLD (GCD)

| | |
|--|--|
| RNP APCH - GPS. | MISSED APPROACH: Climb to 12000 direct YERPU and on track 057° to OXVEN and hold, continue climb-in-hold to 12000. |
| ▼ When local altimeter setting not received, procedure NA. Rwy 9 helicopter visibility reduction below 3/4 SM NA. | |

| | | |
|--------------------------|--|--|
| AWOS-3 118.375 | SEATTLE CENTER 128.15 257.75 | UNICOM 122.8 (CTAF) 0 |
|--------------------------|--|--|



NW-1, 13 JUN 2024 to 11 JUL 2024

NW-1, 13 JUN 2024 to 11 JUL 2024

| | | | | | | | | | | | |
|----------|--|--------|--|-------------|--|-------|--|-------|--|-------|--|
| VECUC | | UDEYI | | JUVUL | | 12000 | | YERPU | | OXVEN | |
| 8000 | | 6800 | | 6300 | | 12000 | | YERPU | | OXVEN | |
| GP 3.40° | | 6300 | | 6300 | | 12000 | | YERPU | | OXVEN | |
| TCH 54 | | 6300 | | 6300 | | 12000 | | YERPU | | OXVEN | |
| 4.1 NM | | 2 NM | | 7.1 NM | | 12000 | | YERPU | | OXVEN | |
| CATEGORY | | A | | B | | C | | D | | | |
| LPV DA | | 4269-2 | | 600 (600-2) | | | | NA | | | |

ELEV 3703

TDZE 3669

REIL Rws 17 and 9
MRL Rws 9-27 and 17-35