

| | | | |
|--|------------------------|---|---|
| WAAS CH 56246 W16A | APP CRS 159° | Rwy Idg TDZE 1287 Apt Elev 1288 | 8800 1287 1288 |
|--|------------------------|---|---|

RNAV (GPS) RWY 16L

NORTHWEST ARKANSAS NTL (XNA)

RNP APCH - GPS.

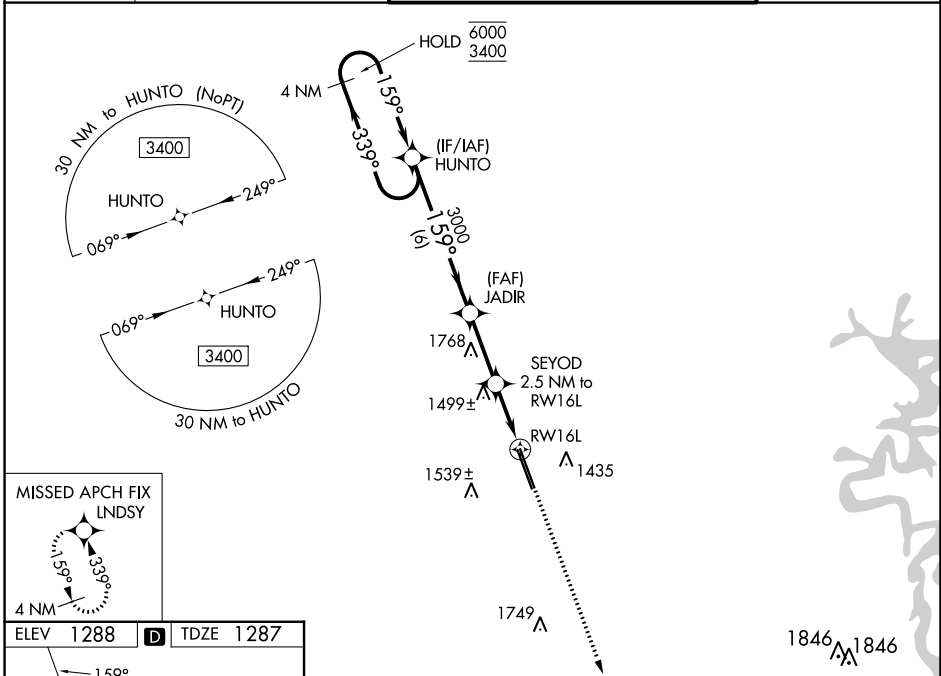
⚠ For uncompensated Baro-VNAV systems, LNAV/VNAV NA below -15°C or above 54°C. For inop ALS, increase LPV Cat E visibility to RVR 4000, LNAV/VNAV Cat E visibility to 1¼ SM and LNAV Cats C, D, and E visibility to 1½ SM. *RVR 1800 authorized with use of FD or AP or HUD to DA.

MALSR

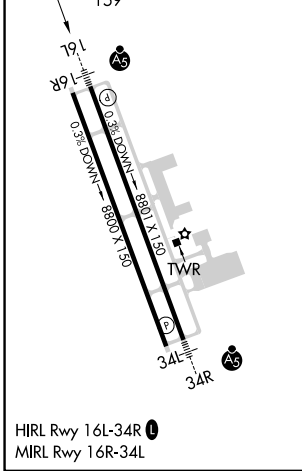


MISSED APPROACH:
Climb to 3400 direct LND SY and hold.

| | | | |
|------------------------|---|---|-------------------------|
| ATIS 119.425 | RAZORBACK APP CON * 121.0 244.575 | NORTHWEST ARKANSAS NTL TOWER * 127.1 (CTAF) 0 | GND CON 121.9 |
|------------------------|---|---|-------------------------|



| | | |
|------------------|----------|------------------|
| ELEV 1288 | D | TDZE 1287 |
|------------------|----------|------------------|



| | | | | | | |
|----------------------|---------|--|-------------------------|-------------------------|-------------------------|-------------|
| 4 NM Holding Pattern | | VGSi and RNAV glidepath not coincident (VGSi Angle 3.00/TCH 52). | | | 3400 | LND SY |
| 6000 ← 339° | | → 159° | | 3000 | ↑ | |
| GP 3.00° TCH 57 | | 159° | | 2140 | ✧ | |
| ← 6 NM | | ← 2.7 NM | | 1.2 | 1.3 | |
| CATEGORY | A | B | C | D | E | |
| LPV DA* | 1487/24 | | 200 (200-½) | | | |
| LNAV/VNAV DA | 1710/40 | | 423 (500-¾) | | | |
| LNAV MDA | 1760/24 | 473 (500-½) | | 1760/50 | | 473 (500-1) |
| CIRCLING | 1760-1 | 472 (500-1) | 2040-2¼ 752 (800-2¼) | 2080-2½ 792 (800-2½) | 2080-2¾ 792 (800-2¾) | |

SC-1, 13 JUN 2024 to 11 JUL 2024

SC-1, 13 JUN 2024 to 11 JUL 2024