

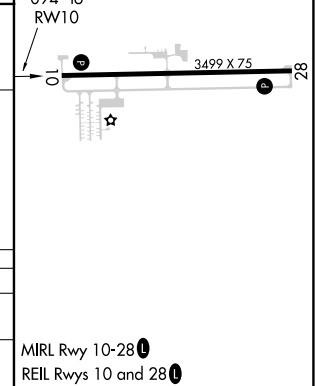
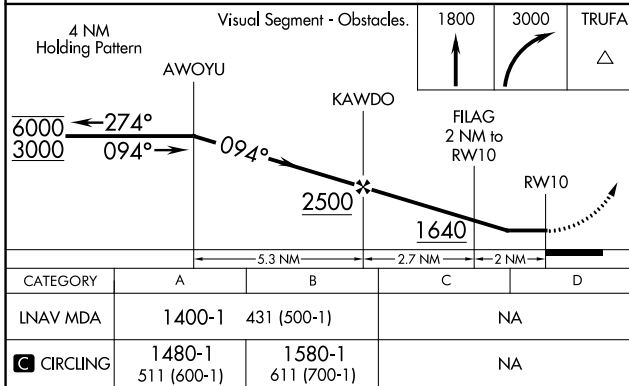
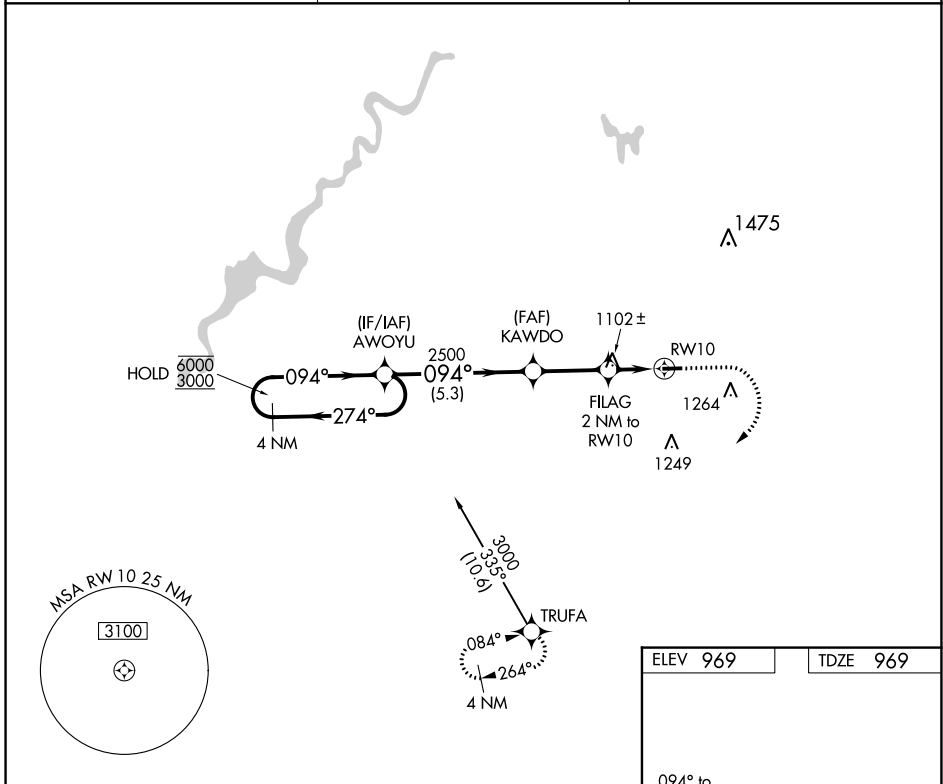
APP CRS	Rwy Idg	3499
094°	TDZE	969
	Apt Elev	969

RNAV (GPS) RWY 10

LAKEVIEW/GRIFFITH FLD (13C)

RNP APCH.	Procedure NA at night. Rwy 10 helicopter visibility reduction below 1 SM NA. Use Big Rapids altimeter setting.	MISSED APPROACH: Climb to 1800 then climbing right turn to 3000 direct TRUFA and hold.
⚠ NA		

RQB AWOS-3P 125.875	GREAT LAKES APP CON * 124.6 257.6	UNICOM 122.8 (CTAF)
-------------------------------	---	-------------------------------



ELEV	969	TDZE	969
------	-----	------	-----

CATEGORY	A	B	C	D
LNAV MDA	1400-1	431 (500-1)	NA	
CIRCLING	1480-1 511 (600-1)	1580-1 611 (700-1)	NA	

MIRL Rwy 10-28
REIL Rwy 10 and 28

EC-1, 13 JUN 2024 to 11 JUL 2024

EC-1, 13 JUN 2024 to 11 JUL 2024