

WAAS CH 48937 W31A	APP CRS 304°	Rwy Idg TDZE Apt Elev	3300 992 993
--	------------------------	-----------------------------	---

RNAV (GPS) RWY 31

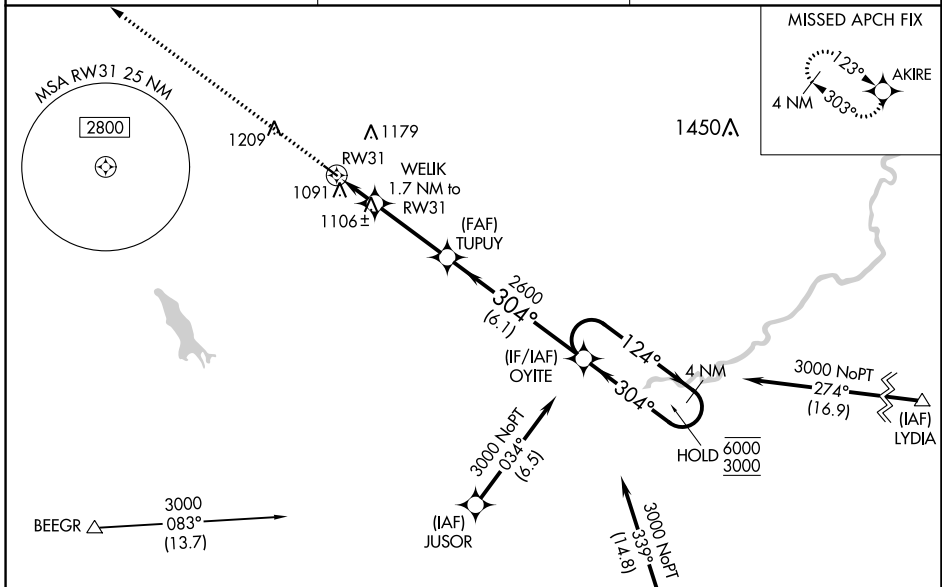
GLENCOE MUNI (GYL)

RNP APCH - GPS.

⚠ For uncompensated Baro-VNAV systems, LNAV/VNAV NA below -16°C or above 54°C. Baro-VNAV and VDP NA when using Hutchinson altimeter setting. When local altimeter setting not received, use Hutchinson altimeter setting: increase LPV DA to 1285 feet; increase LNAV/VNAV DA to 1296 feet; increase all MDAs 60 feet.

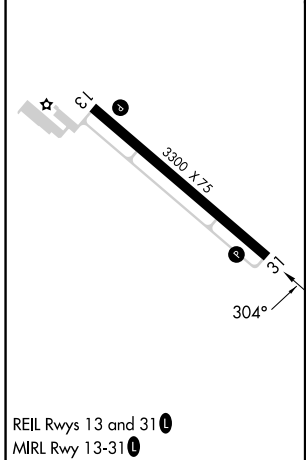
MISSED APPROACH: Climb to 3000 direct AKIRE and hold.

AWOS-3 119.625	MINNEAPOLIS APP CON 134.7 284.7	UNICOM 122.8 (CTAF) 0
--------------------------	---	---------------------------------



ELEV 993	TDZE 992
----------	----------

Procedure NA for arrivals at ZANNA on T400 southwest bound.



3000	AKIRE	VGSi and RNAV glidepath not coincident (VGSi Angle 3.00/TCH 28).		OYITE	4 NM
		WELIK	TUPUY		Holding Pattern
		1.7 NM to RW31	2600		
		1.1 NM to RW31		124°	6000
				304°	3000
		1560	2600		GP 3.00°
		1.1 NM	0.6	3.2 NM	TCH 40
				6.1 NM	
CATEGORY	A	B	C	D	
LPV DA	1242-7/8	250 (300-7/8)			NA
LNAV/VNAV DA	1253-7/8	261 (300-7/8)			NA
LNAV MDA	1360-1	368 (400-1)			NA
CIRCLING	1420-1	1480-1			NA
	427 (500-1)	487 (500-1)			

NC-1, 13 JUN 2024 to 11 JUL 2024

NC-1, 13 JUN 2024 to 11 JUL 2024