

WAAS CH 50515 W32A	APP CRS 313°	Rwy ldg TDZE Apt Elev	3600 1608 1608
--	------------------------	-----------------------------	---

RNAV (GPS) RWY 32

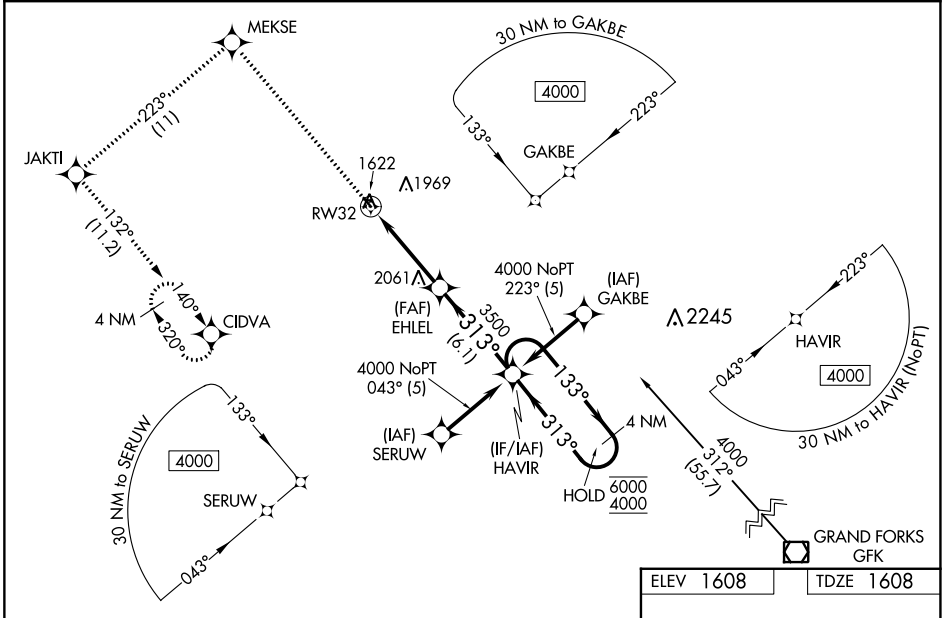
ROBERTSON FLD (D55)

RNP APCH - GPS.

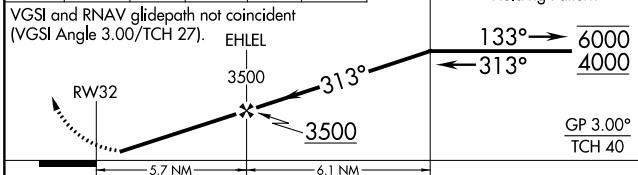
⚠ Circling NA to Rws 8 and 26. Rwy 32 helicopter visibility reduction below $\frac{3}{4}$ SM NA. Baro-VNAV NA when using Devils Lake altimeter setting. For uncompensated Baro-VNAV systems, LNAV/VNAV NA below -18°C or above 54°C . When local altimeter setting not received, use Devils Lake altimeter setting and increase LPV DA to 1983 feet; increase LNAV/VNAV DA to 2284 feet and all visibilities $\frac{1}{4}$ SM. Increase all MDAs 140 feet and LNAV visibility Cat A/C $\frac{1}{2}$ SM, and Circling visibility Cat A/C $\frac{1}{2}$ SM.

MISSED APPROACH: Climb to 4000 direct MEKSE and on 223° track to JAKTI and on 132° track to CIDVA and hold.

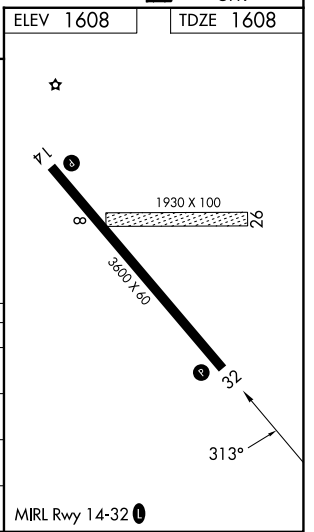
AWOS-3 118.225	MINNEAPOLIS CENTER 132.15 269.6	UNICOM 122.8 (CTAF) 0
--------------------------	---	---------------------------------



4000	MEKSE	tr 223°	JAKTI	tr 132°	CIDVA	HAVIR	4 NM Holding Pattern
------	-------	---------	-------	---------	-------	-------	----------------------



CATEGORY	A	B	C	D
LPV DA	1858-1	250 (300-1)		NA
LNAV/VNAV DA	2159-1 $\frac{5}{8}$	551 (600-1 $\frac{5}{8}$)		NA
LNAV MDA	2360-1 752 (800-1)	2360-1 $\frac{1}{4}$ 752 (800-1 $\frac{1}{4}$)	2360-2 752 (800-2)	NA
CIRCLING	2360-1 752 (800-1)	2360-1 $\frac{1}{4}$ 752 (800-1 $\frac{1}{4}$)	2360-2 $\frac{1}{4}$ 752 (800-2 $\frac{1}{4}$)	NA



NC-1, 13 JUN 2024 to 11 JUL 2024

NC-1, 13 JUN 2024 to 11 JUL 2024