

| | | | |
|--|------------------------|-----------------------------|---|
| WAAS CH 86630 W27A | APP CRS 280° | Rwy Idg TDZE Apt Elev | 3700 1779 1779 |
|--|------------------------|-----------------------------|---|

RNAV (GPS) RWY 27

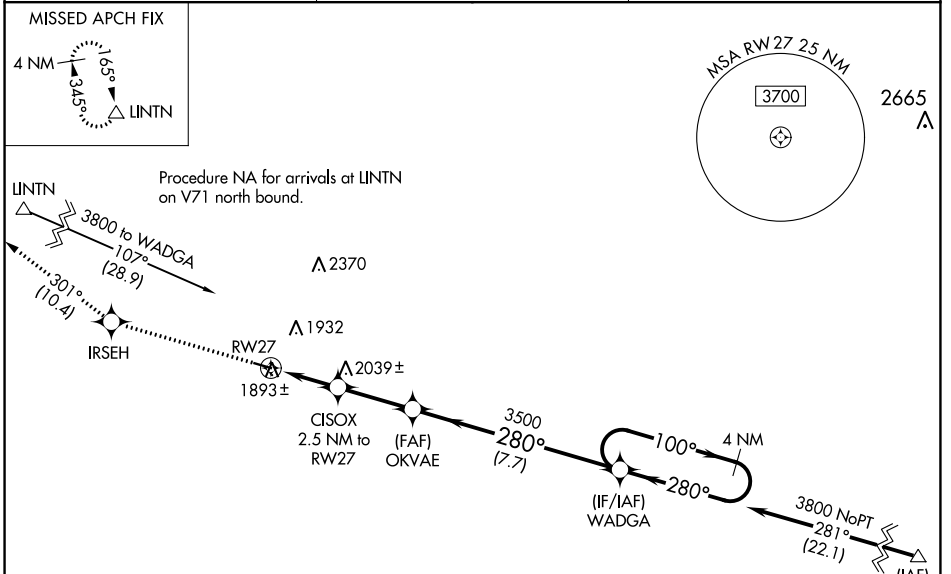
LINTON MUNI (7L2)

RNP APCH.

▼ For uncompensated Baro-VNAV systems, LNAV/VNAV NA below -18°C or above 54°C.
 ▲ Rwy 27 helicopter visibility reduction below 3/4 SM NA. When local altimeter setting not received, use Bismarck Muni altimeter setting and increase all DA 107 feet and visibility LPV and LNAV/VNAV all Cats 1/4 SM; increase all MDA 120 feet and visibility LNAV Cat C 1/4 SM. Baro-VNAV and VDP NA when using Bismarck Muni altimeter setting.

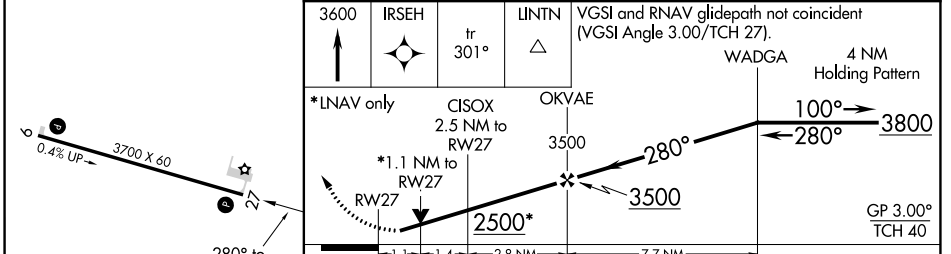
MISSED APPROACH: Climb to 3600 direct IRSEH and on track 301° to LINTN and hold.

| | | |
|--------------------------|---|----------------------|
| ASOS-3 118.175 | MINNEAPOLIS CENTER 135.25 256.7 | CTAF 122.9 |
|--------------------------|---|----------------------|



| | |
|-----------|-----------|
| ELEV 1779 | TDZE 1779 |
|-----------|-----------|

Procedure NA for arrivals at IRIWY on V15 southeast bound.



| CATEGORY | A | B | C | D |
|--------------|--------------------|-------------|-------------------------------|----|
| LPV DA | 2029-1 250 (300-1) | | | NA |
| LNAV/VNAV DA | 2043-1 264 (300-1) | | | NA |
| LNAV MDA | 2160-1 | 381 (400-1) | 2160-1 1/8 381 (400-1 1/8) | NA |

NC-1, 13 JUN 2024 to 11 JUL 2024

NC-1, 13 JUN 2024 to 11 JUL 2024